



**Unibilt Homes
Cape Cod Plans**

Unibilt Industries was founded by Carl Scholz, a veteran of the home building business. Carl literally grew up working and learning the various homebuilding trades from his father, a building contractor. In 1950 Carl opened a lumber yard in Vandalia, Ohio to service the post war construction housing boom and quickly expanded into manufacturing of wall panels, roof trusses and pre-hung doors. Carl loved to innovate and create greater production efficiencies. He saw his 1969 entry into the developing modular home industry as a natural progression in his quest for more affordable, better designed and higher quality homes.

Thirty-eight years later, having produced over eleven thousand homes, Unibilt Industries is a nationally recognized leader in the modular home industry. The company remains a family owned business rooted to its small town, mid-western values of hard work, honesty and fairness. The company has been built on long term relationships, using many of the same high quality product vendors for nearly four decades. As a group, Unibilt's employees have hundreds of years of proven on-the-job experience. Doug Scholz, Carl's son, has been President since 1975.



Unibilt homes are efficiently constructed with the utmost attention to detail. The in-plant building process enables the use of advanced building technologies combined with skilled craftsmanship and closely monitored quality control.

Unibilt homes are sold exclusively through a network of independent builders in Indiana, Kentucky, Michigan, Ohio and West Virginia. Unibilt's current builders have sold over 80% of Unibilt's 11,000 home sales. These experienced builders provide turnkey construction services for homebuyers, assisting them with architectural design, product selection, site improvements and all construction work required to complete the modular home.

Unibilt offers many floor plans for any lifestyle. From small cozy vacation cottages to large, elaborately detailed colonial two story homes Unibilt can meet your family's needs. Select from one of our pre-designed homes and make modifications as you see fit, or work with Unibilt's builders and professional design staff to create the home of your dreams.

Thank you for your interest in our Unibilt homes.



EQUAL HOUSING
OPPORTUNITY

Unibilt®

www.unibiltcustomhomes.com

Cape Cod Index

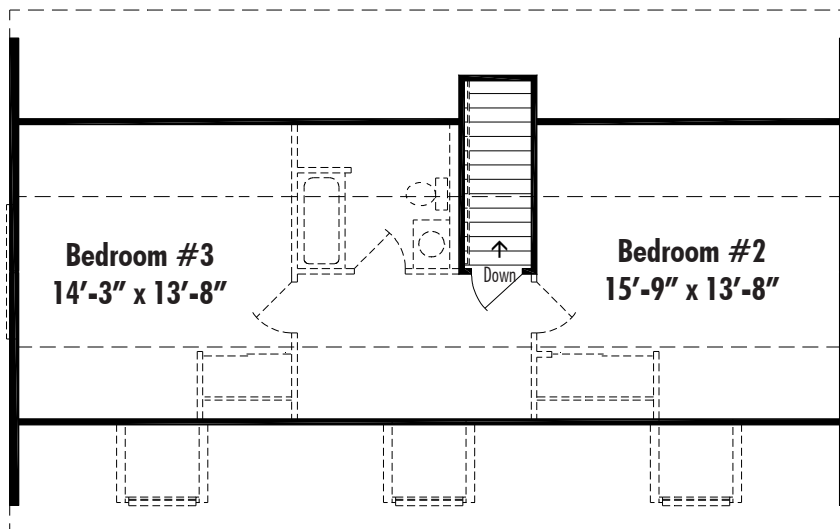
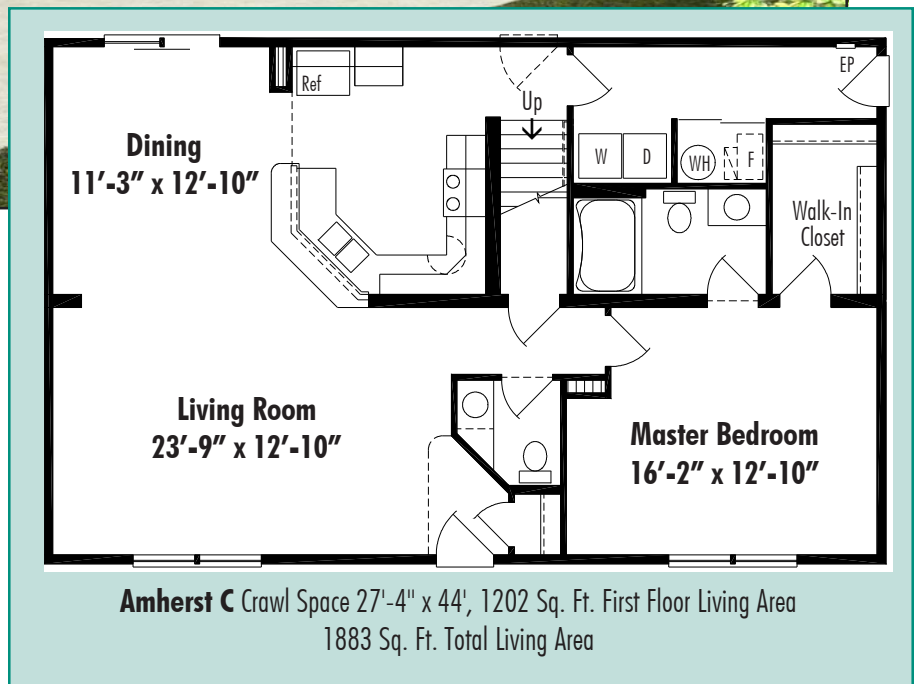
Cape Cod Series	Module Lengths	Model	Square Feet	No. of First Floor Bedrooms	No. of First Floor Bathrooms	Page
Amherst C.....	44/44.....	AHC.....	1202.....	1.....	2.....	4
Amherst B.....	44/44.....	AHB.....	1202.....	1.....	2.....	5
Berkshire C.....	54/54.....	BKC.....	1476.....	1.....	1 ½.....	6
Berkshire B.....	54/54.....	BKB.....	1476.....	1.....	1 ½.....	7
Chalet I A.....	44/44.....	CLA.....	1202.....	2.....	1.....	8
Chalet I B.....	44/44.....	CLB.....	1202.....	2.....	1.....	9
Chatham C.....	48/48.....	CTC.....	1312.....	2.....	2.....	10
Chatham B.....	48/48.....	CTB.....	1312.....	2.....	2.....	11
Concord C.....	54/54.....	CCC.....	1476.....	1.....	1 ½.....	12
Concord B.....	54/54.....	CCB.....	1476.....	1.....	1 ½.....	13
Danbury I A.....	48/48.....	DBA.....	1312.....	1.....	1 ½.....	15
Danbury I B.....	48/48.....	DBB.....	1312.....	1.....	1 ½.....	16
Exeter C.....	46/46.....	EXC.....	1257.....	2.....	1.....	18
Exeter B.....	46/46.....	EXB.....	1257.....	2.....	1.....	19
Fairchild I C.....	56/56.....	FCC.....	1522.....	2.....	2.....	20
Fairchild I D.....	56/56.....	FCD.....	1522.....	2.....	2.....	21
Fairfax I C.....	56/56.....	FFC.....	1522.....	2.....	2.....	23
Fairfax I D.....	56/56.....	FFD.....	1522.....	2.....	2.....	24
Hartford C.....	48/48.....	HNC.....	1312.....	1.....	1 ½.....	26
Hartford B.....	48/48.....	HFB.....	1312.....	1.....	1 ½.....	27
Lexington C.....	52/52.....	LXC.....	1412.....	1.....	1½.....	29
Lexington B.....	52/52.....	LXB.....	1412.....	2.....	2.....	30
Modesto C.....	56/56/556.....	MDC.....	2232.....	3.....	2.....	32
Modesto B.....	56/56/56.....	MDB.....	2232.....	3.....	2.....	33
New Haven C.....	56/56.....	NHC.....	1531.....	1.....	1½.....	35
New Haven B.....	56/56.....	NHB.....	1531.....	1.....	1½.....	36
Newport C.....	52/56.....	NPC.....	1476.....	1.....	1½.....	37
Newport B.....	52/56.....	NPB.....	1476.....	1.....	1½.....	38
Rockport C.....	54/56/42.....	RPC.....	2077.....	2.....	2.....	40
Rockport B.....	54/56/42.....	RPB.....	2077.....	2.....	2.....	41
Waterbury C.....	52/52.....	WYC.....	1421.....	1.....	1½.....	45
Waterbury B.....	52/52.....	WYB.....	1421.....	1.....	1½.....	46

Important Information

Floor plan dimensions are approximate. Artist's floorplans, elevation renderings and photographs are for illustration purposes only and may include optional features. Garages, porches and other attachments are not included unless specified in the written contract. All construction details and specifications must be written in the contract. No oral conditions.

Revised 2•01•14

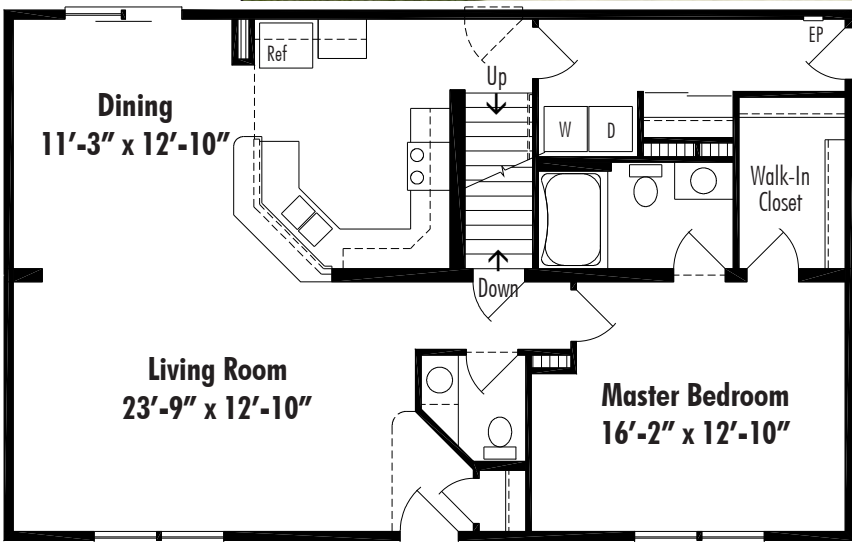
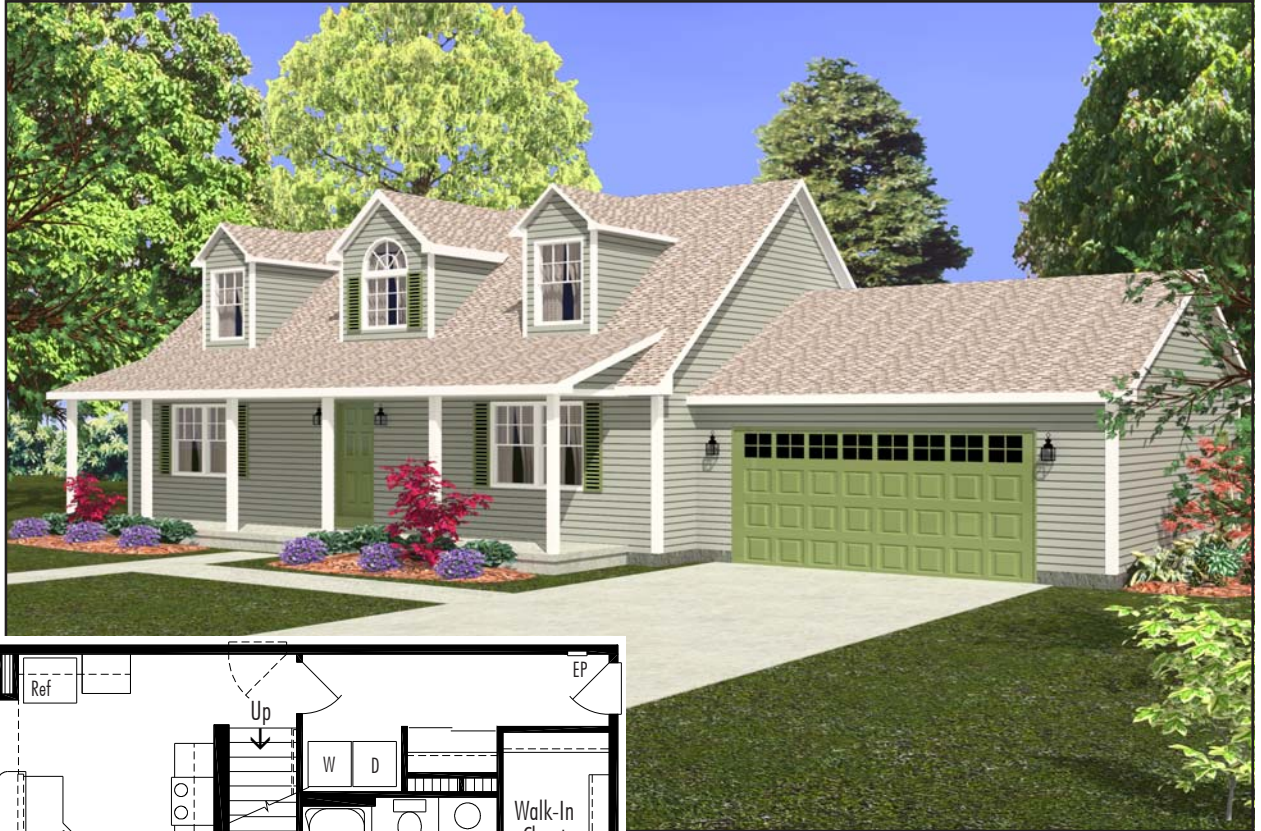
Amherst Crawl Space Plan



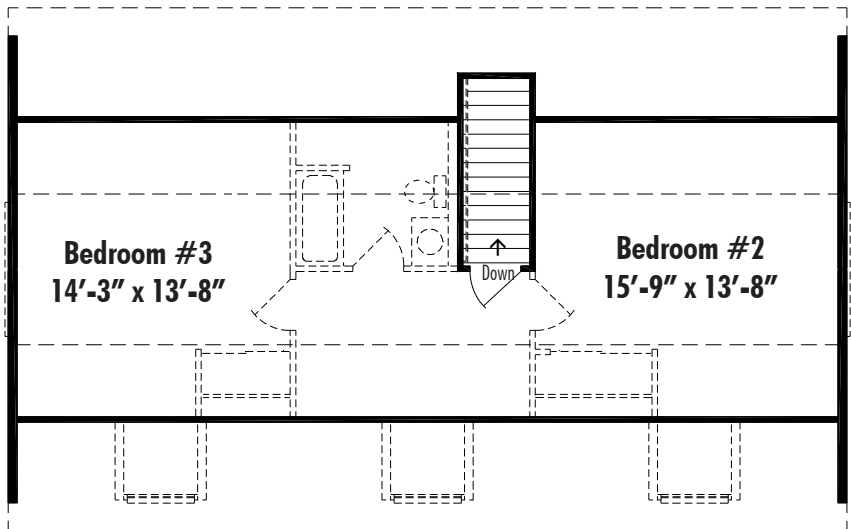
Amherst Unfinished Second Floor 27'-4" x 44'
680 Sr. Ft. Second Floor Living Area



Amherst Basement Plan



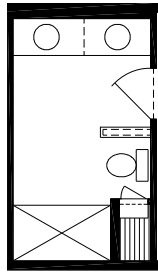
Amherst B Basement 27'-4" x 44'
1202 Sq. Ft. First Floor Living Area,
1883 Sq. Ft. Total Living Area



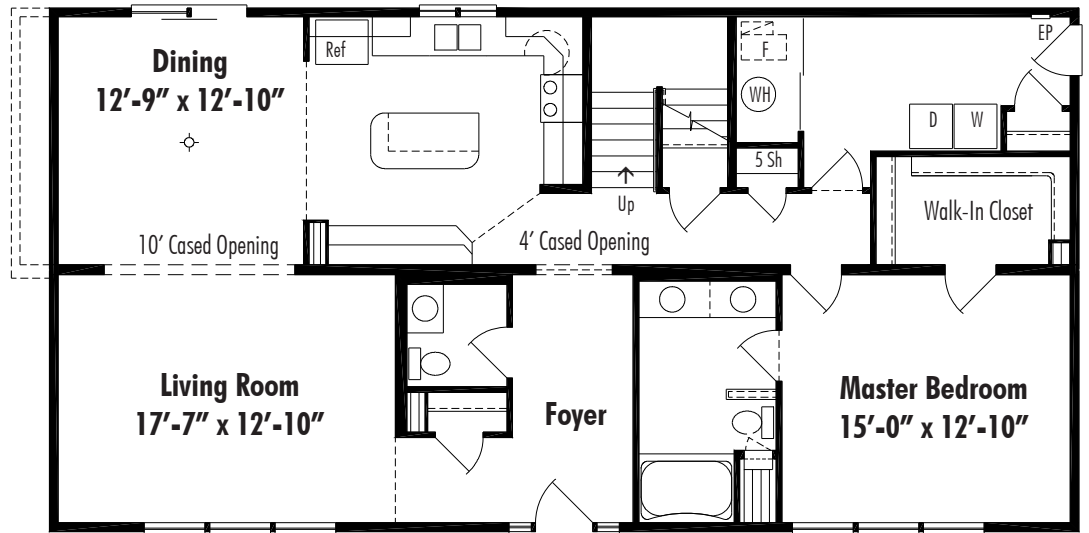
Amherst Unfinished Second Floor 27'-4" x 44'
680 Sr. Ft. Second Floor Living Area

Berkshire

Crawl Space Plan

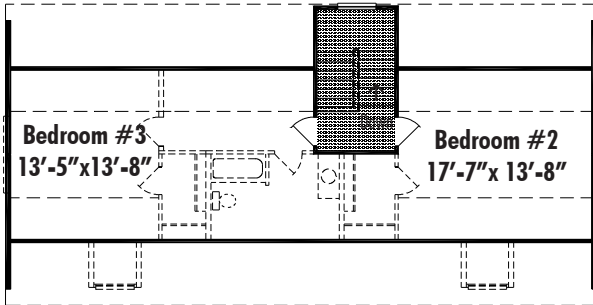


Master Bath Option BKB1
5' Shower

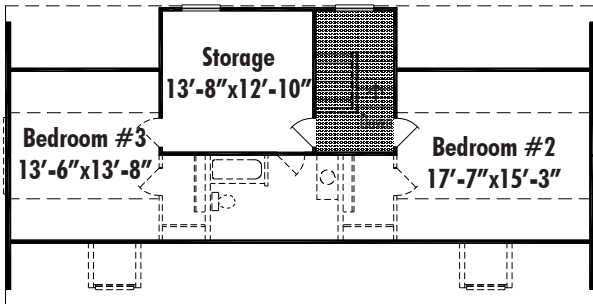


Berkshire C Crawl Space 27'-4" x 54', First Floor Living Area 1476 Sq. Ft.

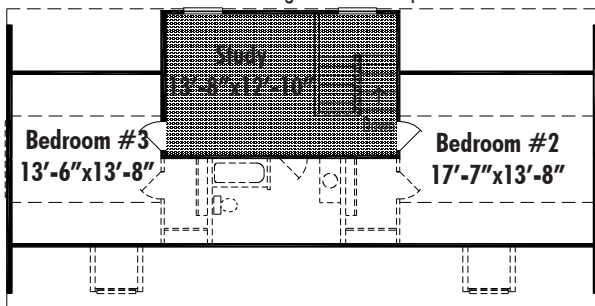
Suggested Second Floor Layout



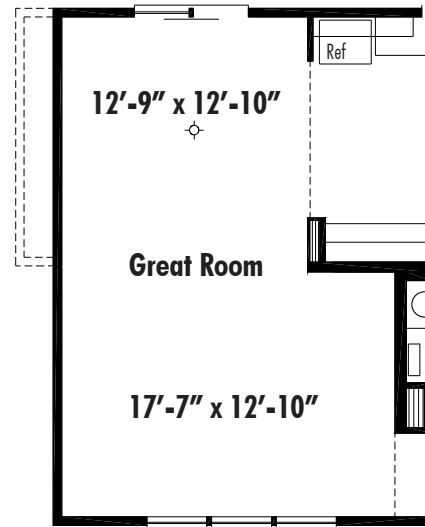
Layout A Rear Stairs (Gable Dormer)
Second Floor Living Area 840 Sq. Ft.



Layout B Rear Stairs with Storage
Second Floor Living Area 919 Sq. Ft.



Layout D Rear Stairs with Study
Second Floor Living Area 919 Sq. Ft.



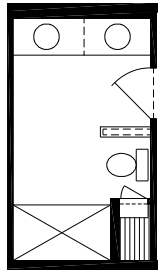
BKG1 Great Room Opening



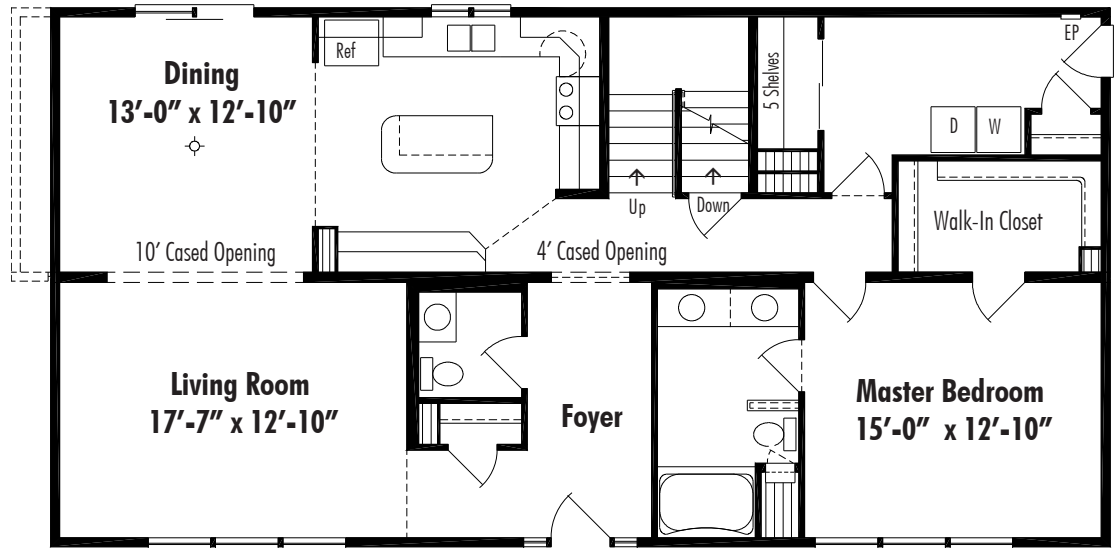
Note: The Second Floor of All Cape Style Homes is Unfinished Space. Shading on the Second Floor Represents Finished Space.

Berkshire

Basement Plan

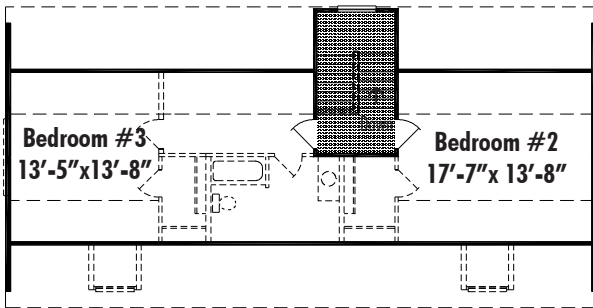


Master Bath Option BKB1
5' Shower

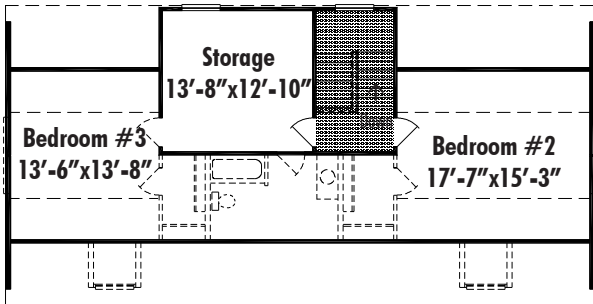


Berkshire B Basement 27'-4" x 54', First Floor Living Area 1476 Sq. Ft.

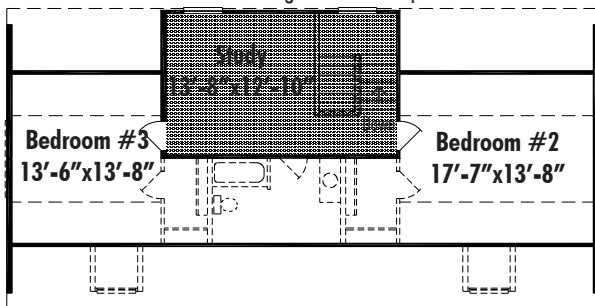
Suggested Second Floor Layout



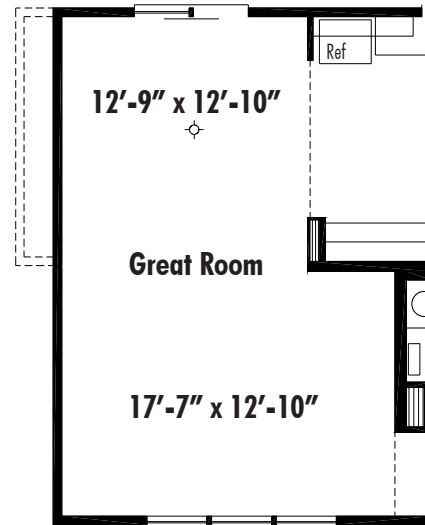
Layout A Rear Stairs (Gable Dormer)
Second Floor Living Area 840 Sq. Ft.



Layout B Rear Stairs with Storage
Second Floor Living Area 919 Sq. Ft.



Layout D Rear Stairs with Study
Second Floor Living Area 919 Sq. Ft.

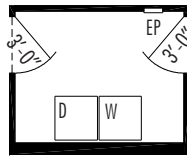
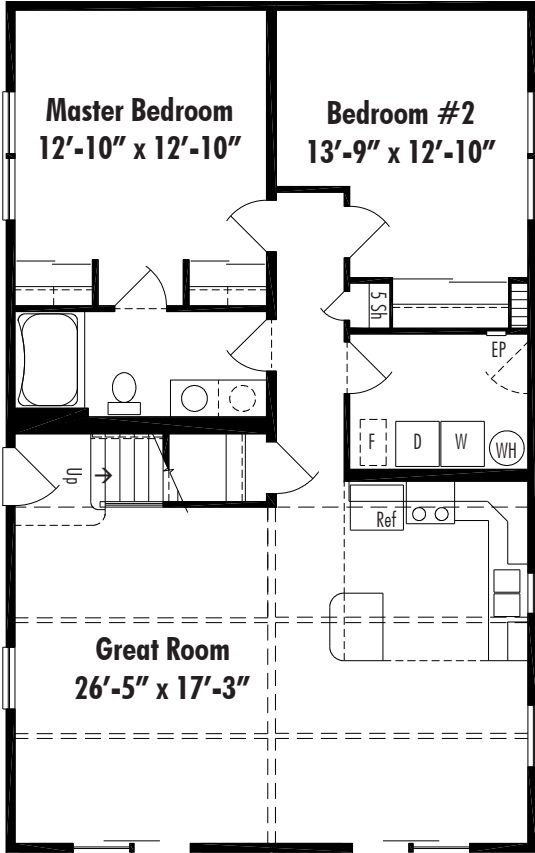


BKG1 Great Room Opening



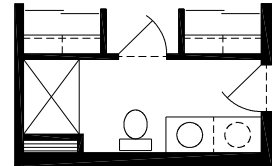
Note: The Second Floor of All Cape Style Homes is Unfinished Space. Shading on the Second Floor Represents Finished Space.

Chalet I Crawl Space Plan



Utility Option CLU1

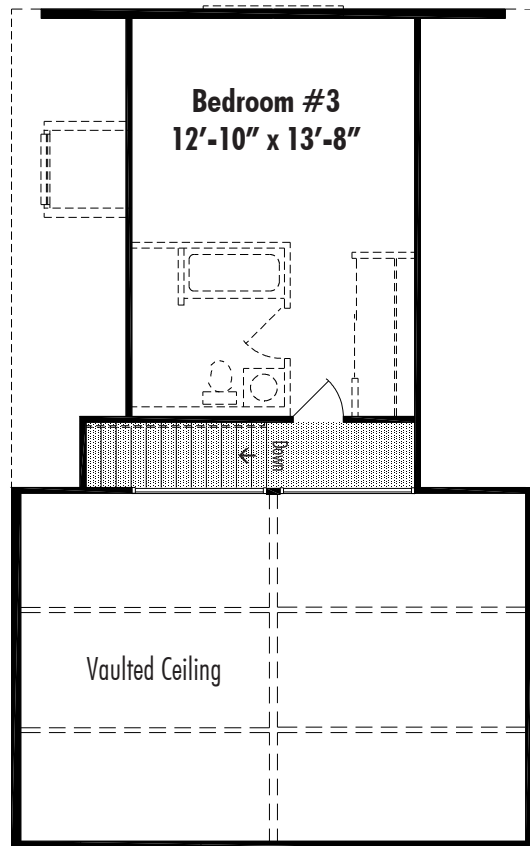
Optional Main Egress Through Laundry Room
 Exit must be to exterior of the building. Exit may not be Through a garage.
 Gas furnace or gas water heater may not be installed in the area.
 Note: Additional charge for exterior door required.



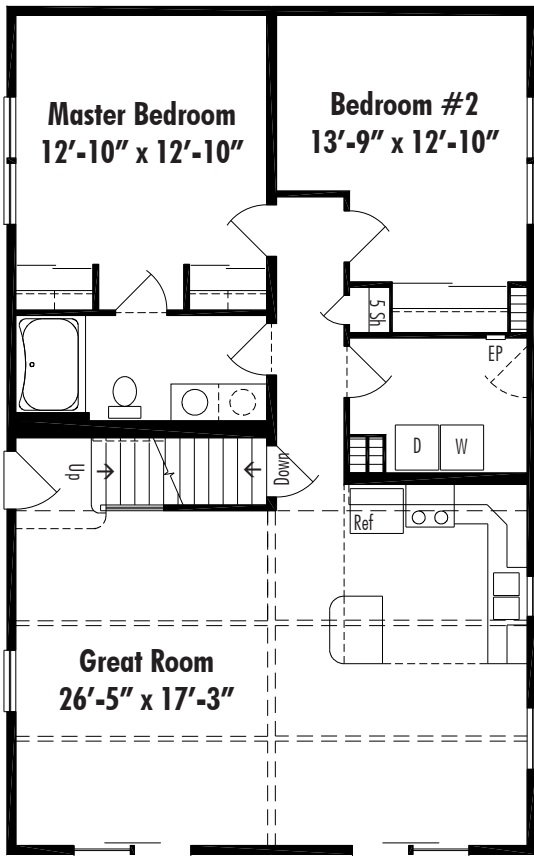
Master Bath Option CLB1 4' Shower

Chalet I A Crawl Space 27'-4" x 44'
 First Floor Living Area 1202 Sq. Ft.

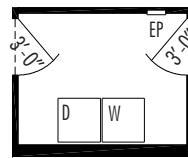
**Suggested Chalet
 Second Floor Layout**
 Note: The Second Floor of All Cape Style Homes is
 Unfinished Space. Shading on the Second Floor
 Represents Finished Space.



Chalet I Basement Plan

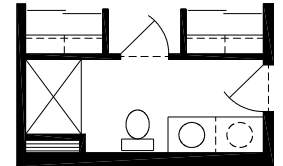


Chalet I B Basement 27'-4" x 44'
First Floor Living Area 1202 Sq. Ft.



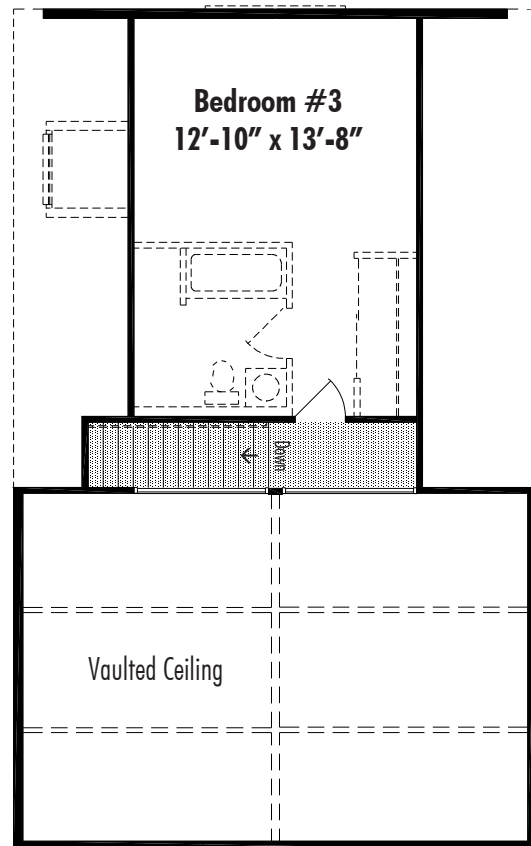
Utility Option CLU1

Optional Main Egress Through Laundry Room
Exit must be to exterior of the building. Exit may not be Through a garage.
Gas furnace or gas water heater may not be installed in the area.
Note: Additional charge for exterior door required.

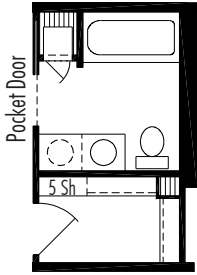


Master Bath Option CLB1 4' Shower

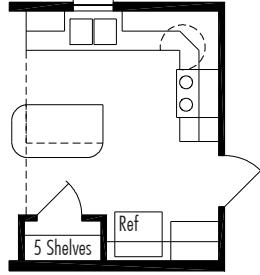
Suggested Chalet Second Floor Layout
Note: The Second Floor of All Cape Style Homes is Unfinished Space. Shading on the Second Floor Represents Finished Space.



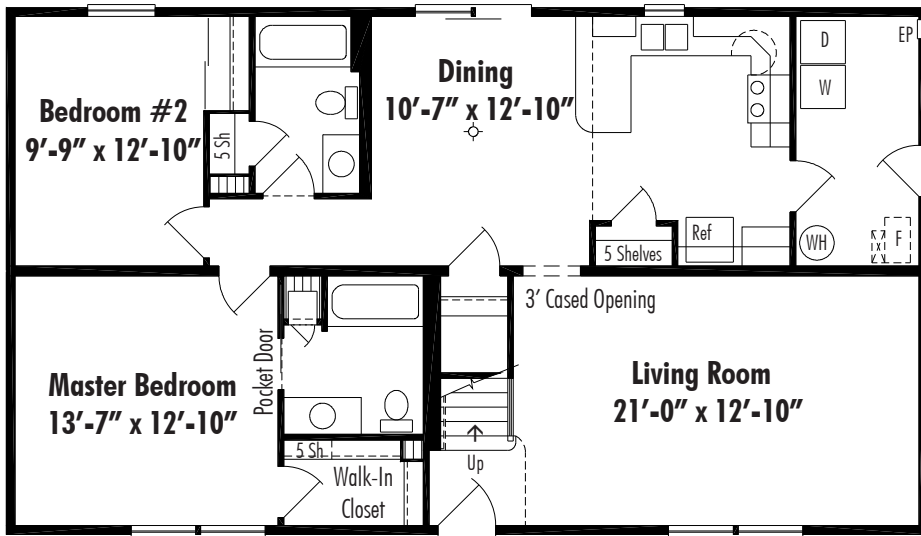
Chatham Crawl Space Plan



Master Bath Option CTB1
Dressing Table



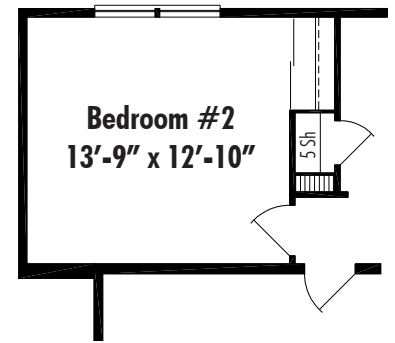
Kitchen Option B
Island Kitchen



Chatham C Crawl Space 27'-4" x 48', First Floor Living Area 1312 Sq. Ft.



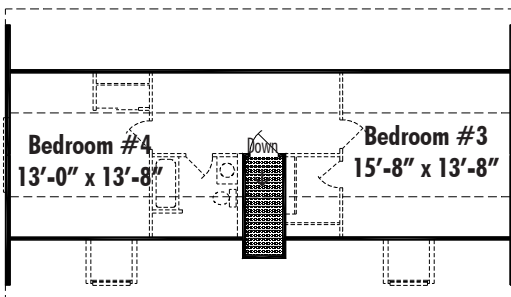
Utility Option CTU1
Alternate Utility Arrangement
(Crawl Space Plan Only)



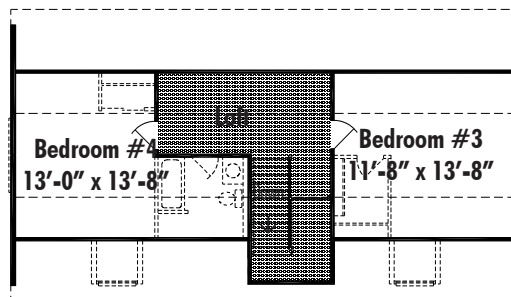
Extended Bedroom Option CTE1
Extended Bedroom #2 (4'-0")

Suggested Layout for Chatham Second Floor

Note: The Second Floor of All Cape Style Homes is Unfinished Space. Shading on the Second Floor Represents Finished Space.

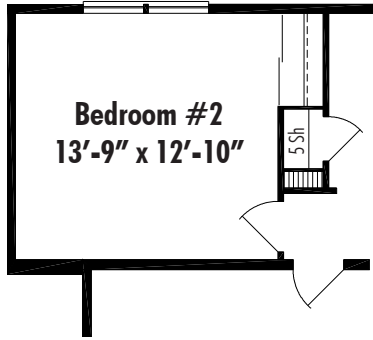


Layout A Front Stairwell
Second Floor Living Area 742 Sq. Ft.

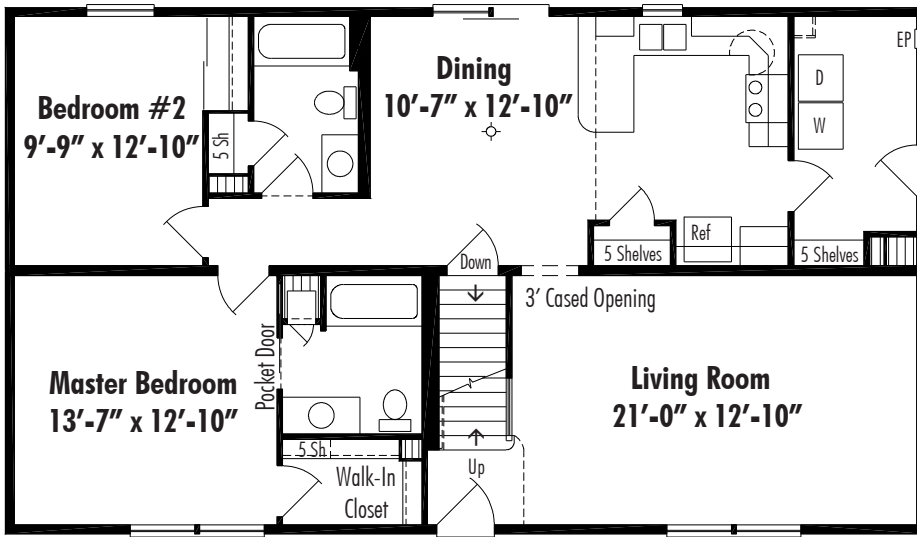


Layout C
Front Balcony with Loft
Second Floor Living Area
729 Sq. Ft.

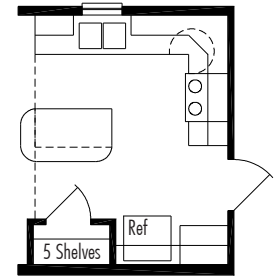
Chatham Basement Plan



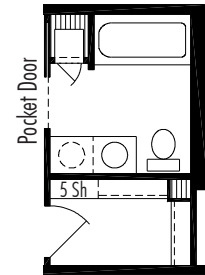
Extended Bedroom Option CTE1
Extended Bedroom #2 (4'-0")



Chatham B Basement 27'-4" x 48', First Floor Living Area 1312 Sq. Ft.



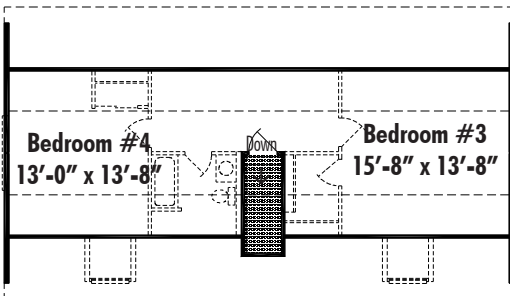
Kitchen Option B
Island Kitchen



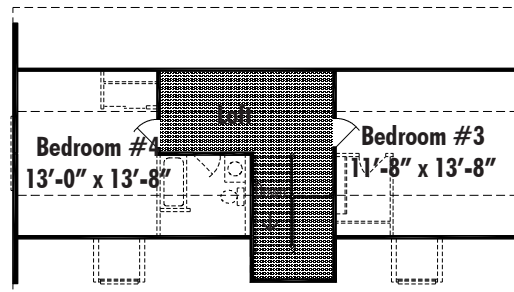
Master Bath Option CTB1
Dressing Table

Suggested Layout for Chatham Second Floor

Note: The Second Floor of All Cape Style Homes is Unfinished Space. Shading on the Second Floor Represents Finished Space.

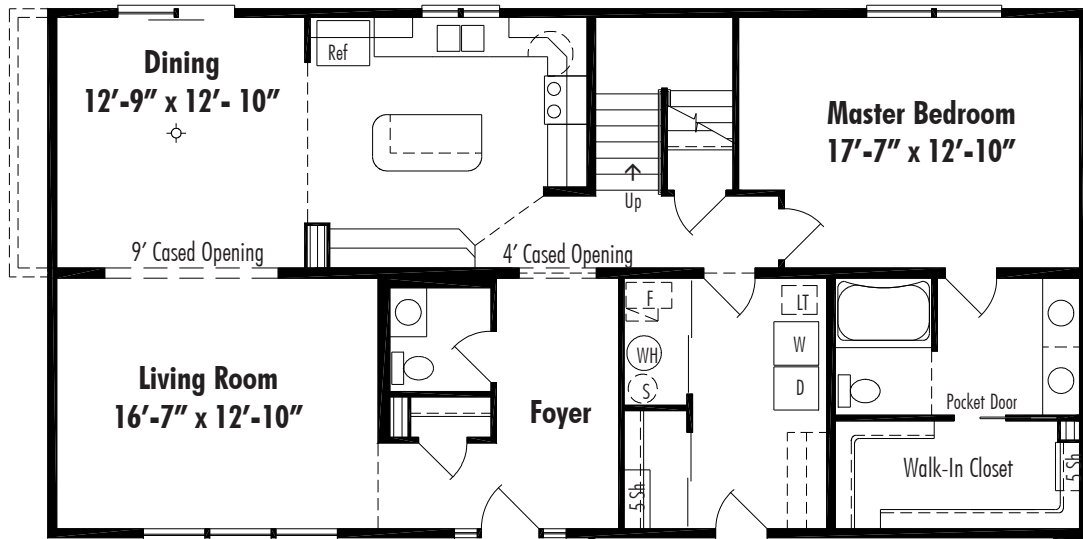


Layout A Front Stairwell
Second Floor Living Area 742 Sq. Ft.

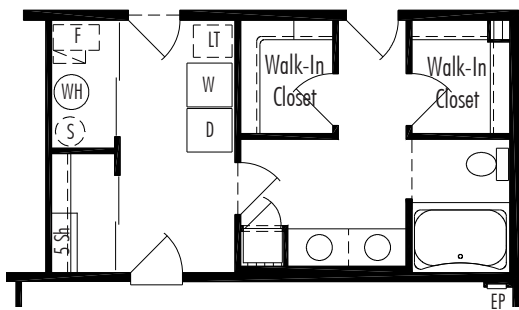


Layout C
Front Balcony with Loft
Second Floor Living Area
729 Sq. Ft.

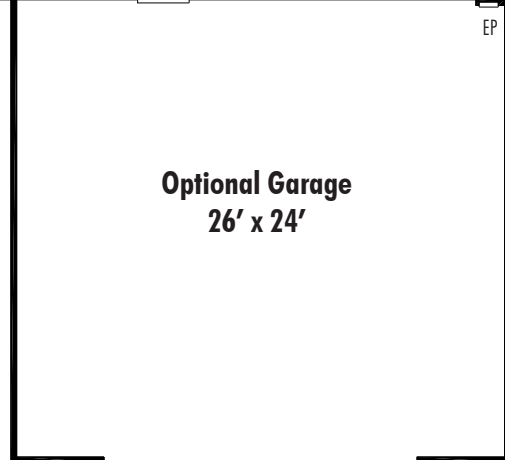
Concord Crawl Space Plan



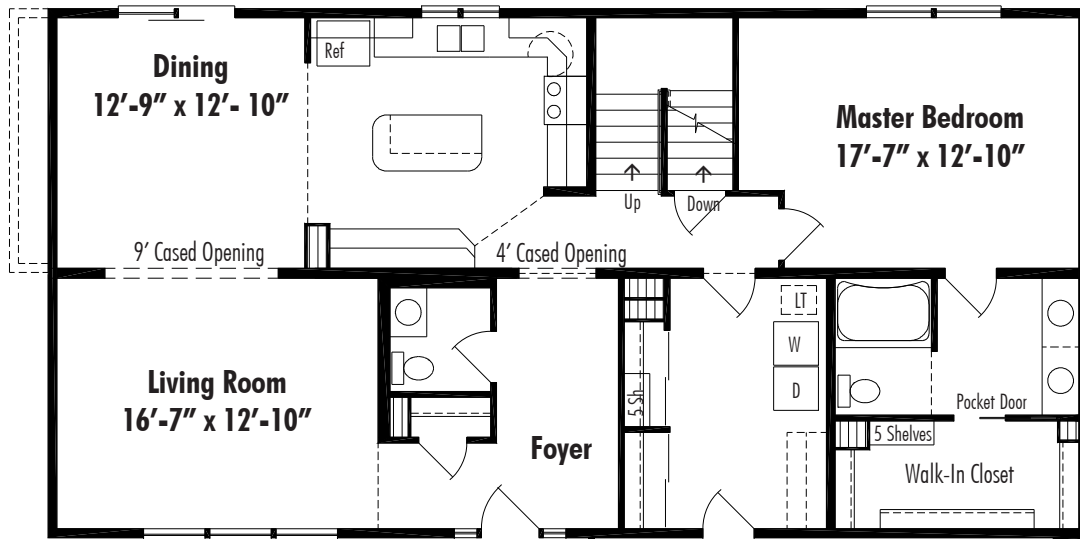
Concord C Crawl Space 27'-4" x 54'
 First Floor Living Area 1476 Sq. Ft.



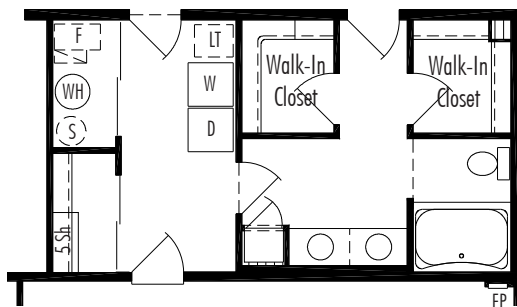
CCB2 Bath with Utility Room Access



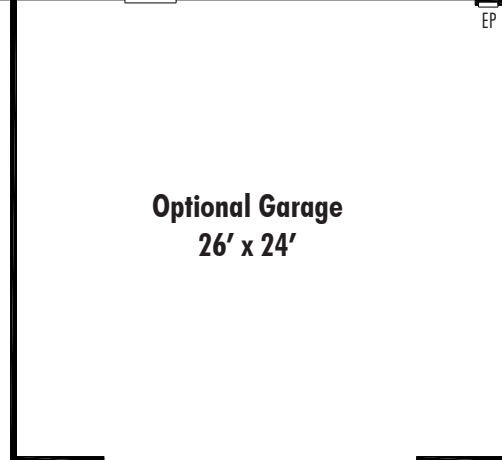
Concord Basement Plan



Concord B Basement 27'-4" x 54'
 First Floor Living Area 1476 Sq. Ft.

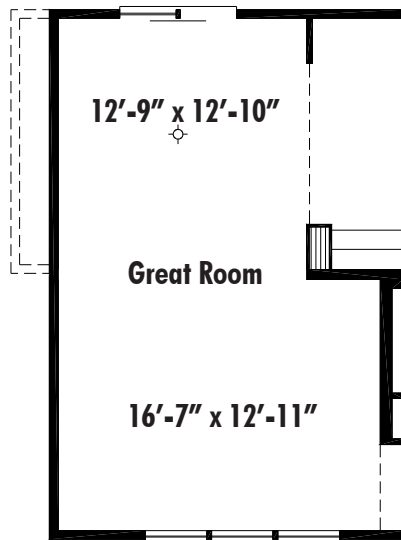


CCB2 Bath with Utility Room Access

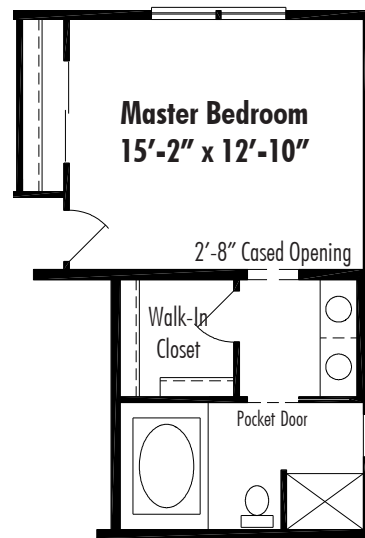


Optional Garage
 26' x 24'

Concord Options and Second Floor Layouts



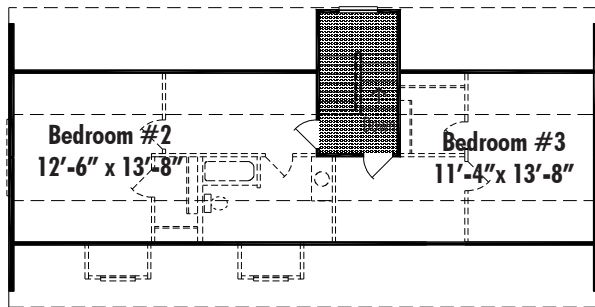
CCG1 Great Room Opening



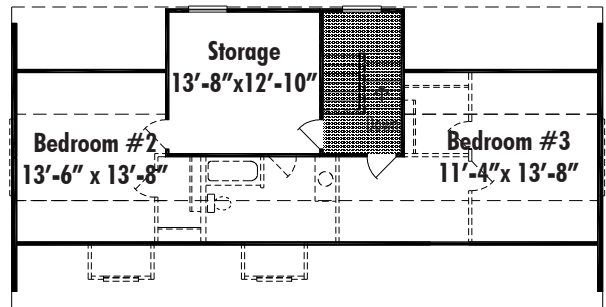
Master Bath Option CCB1
Roman Tub with 4' Shower

Suggested Layout for Concord Second Floor

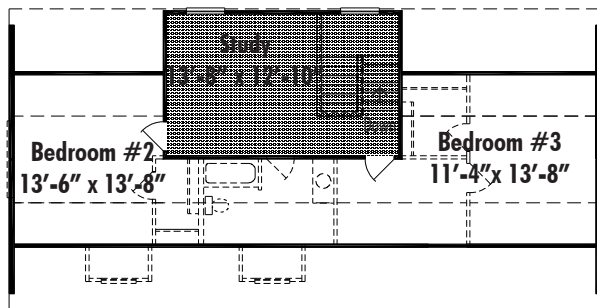
Note: The Second Floor of All Cape Style Homes is Unfinished Space. Shading on the Second Floor Represents Finished Space.



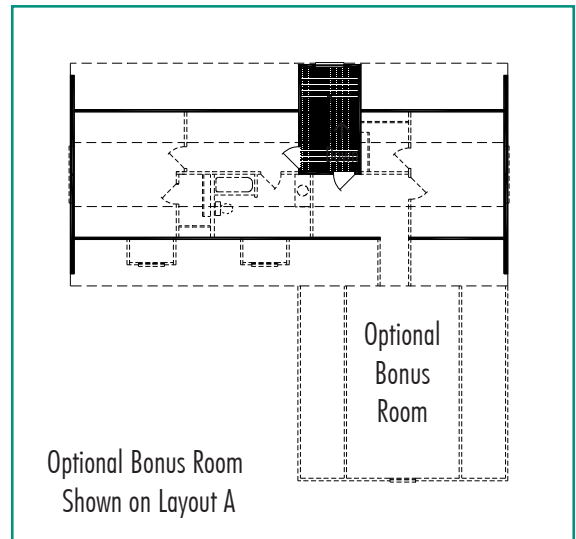
Layout A Rear Stairs (Gable Dormer)
Second Floor Living Area 840 Sq. Ft.



Layout B Rear Stairs with Storage
Second Floor Living Area 919 Sq. Ft.

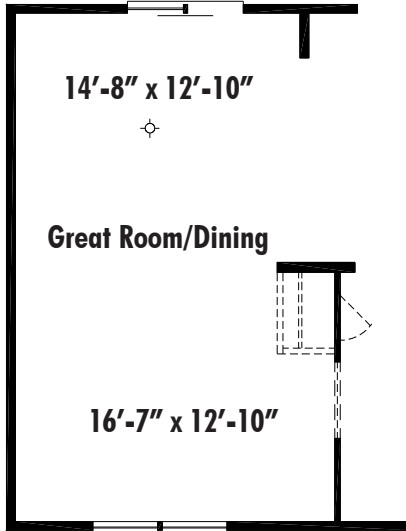


Layout D Rear Stairs with Study
Second Floor Living Area 919 Sq. Ft.

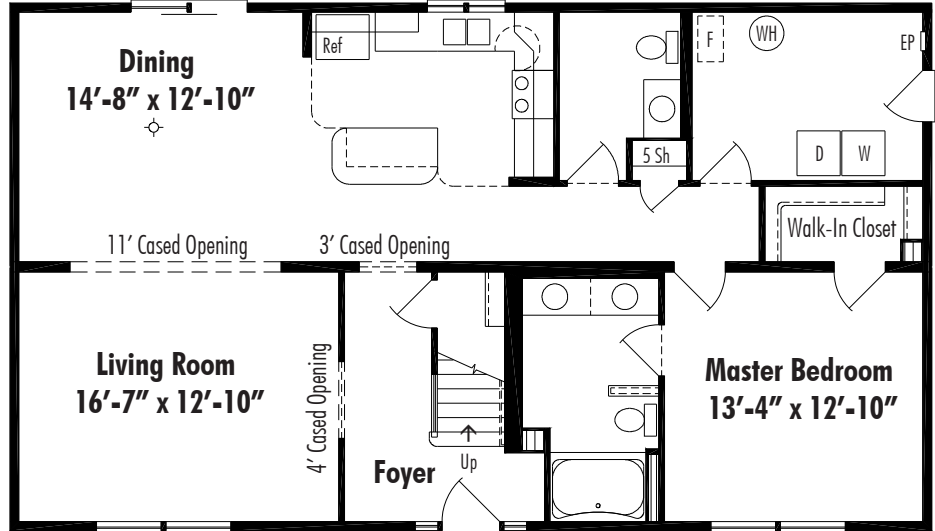


Optional Bonus Room
Shown on Layout A

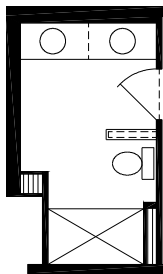
Danbury I Crawl Space Plan



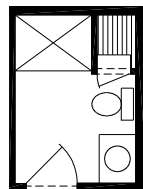
DBG1 Great Room Opening



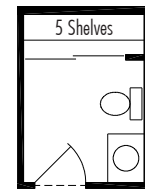
Danbury I A Crawl Space 27'-4" x 48", First Floor Living Area 1312 Sq. Ft.



Master Bath Option DBB1
5' Shower

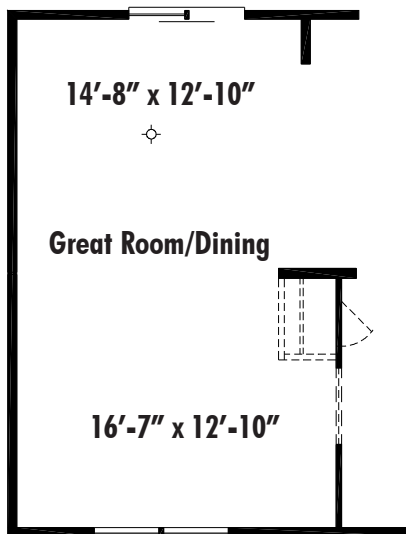


Hall Bath Option DBH1
4' Shower

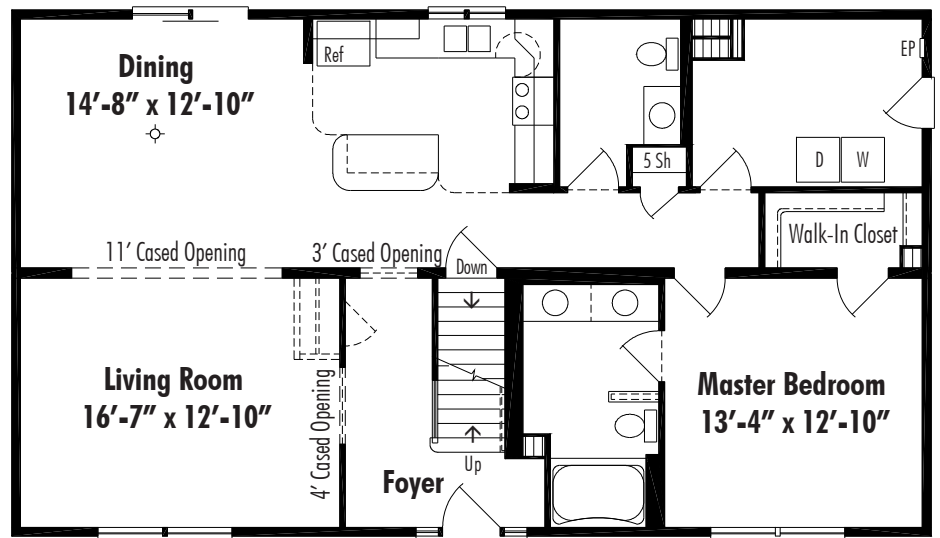


Hall Bath Option DBH2
Linen Closet

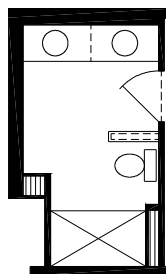
Danbury I Basement Plan



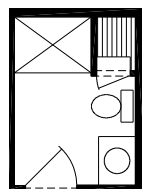
DBG1 Great Room Opening



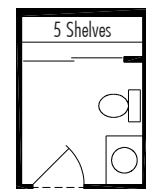
Danbury I B Basement 27'-4" x 48', First Floor Living Area 1312 Sq. Ft.



Master Bath Option DBB1
5' Shower



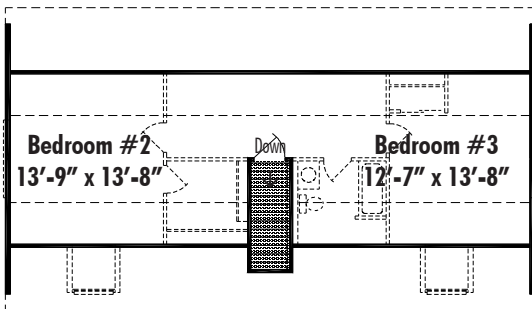
Hall Bath Option DBH1
4' Shower



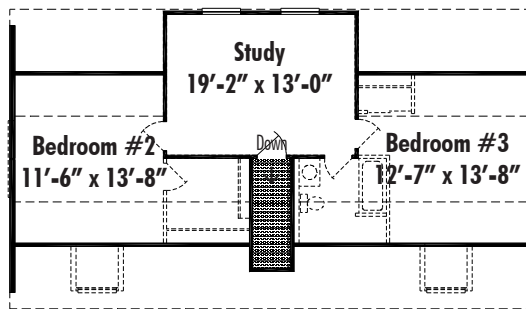
Hall Bath Option DBH2
Linen Closet

Suggested Layout for Danbury I Second Floor

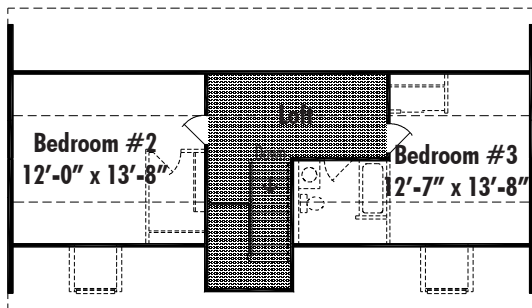
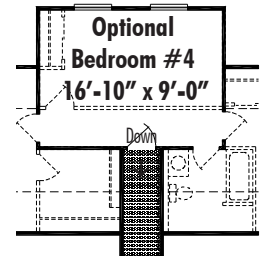
Note: The Second Floor of All Cape Style Homes is Unfinished Space. Shading on the Second Floor Represents Finished Space.



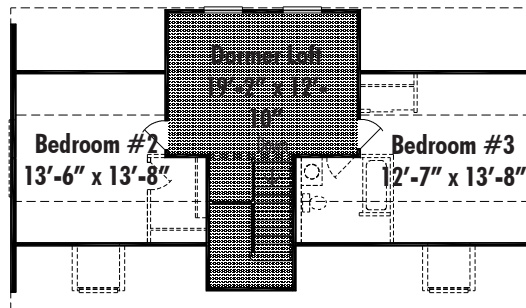
Layout A Front Stairwell
Second Floor Living Area 742 Sq. Ft.



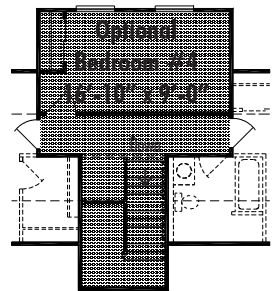
Layout B Front Stairwell with Study
Second Floor Living Area 852 Sq. Ft.

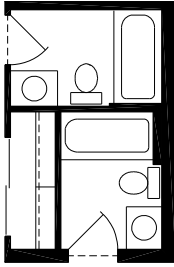


Layout C Front Balcony with Loft
Second Floor Living Area 729 Sq. Ft.



Layout D Front Balcony with Dormer Loft
Second Floor Living Area 839 Sq. Ft.

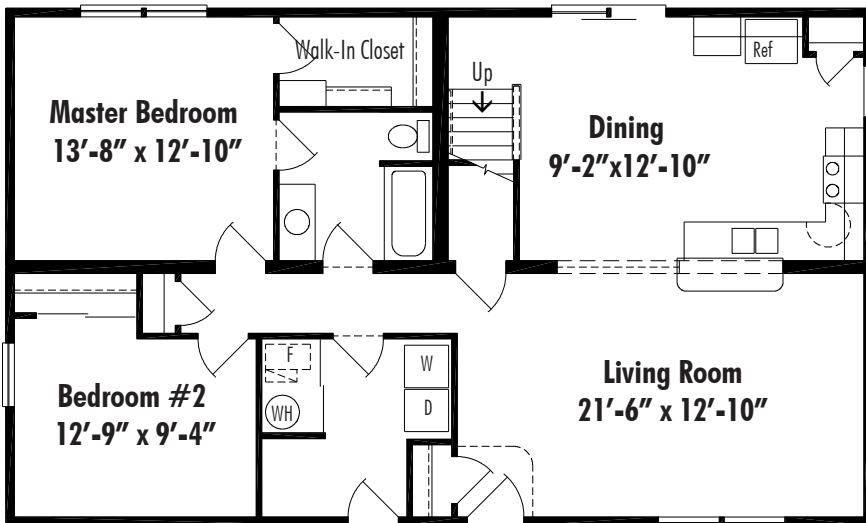




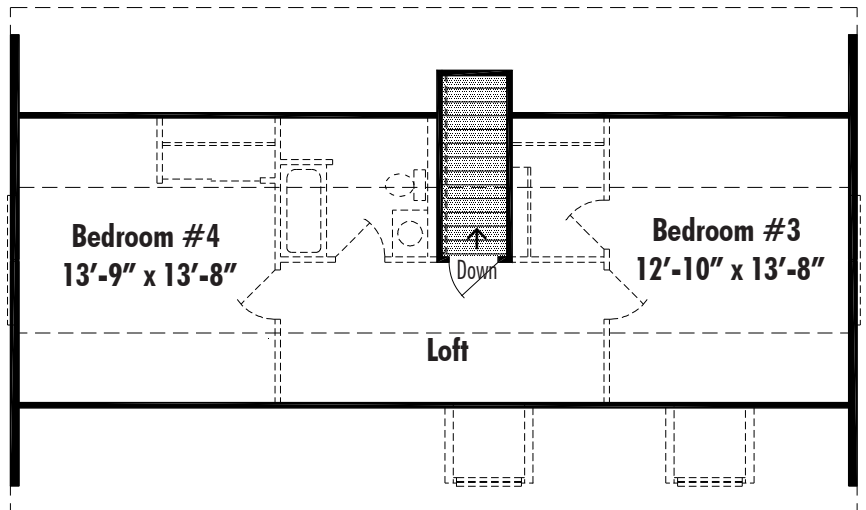
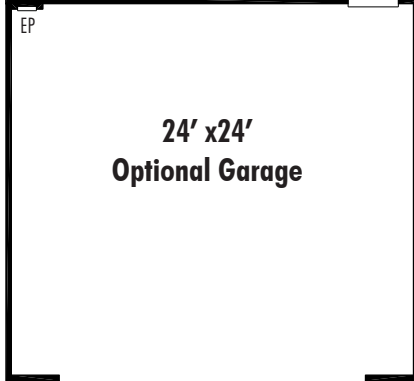
Master Bath Option EXB1

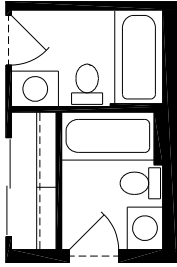


Exeter C Crawl Space 27'-4" x 46',
First Floor Living Area 1257 Sq. Ft.

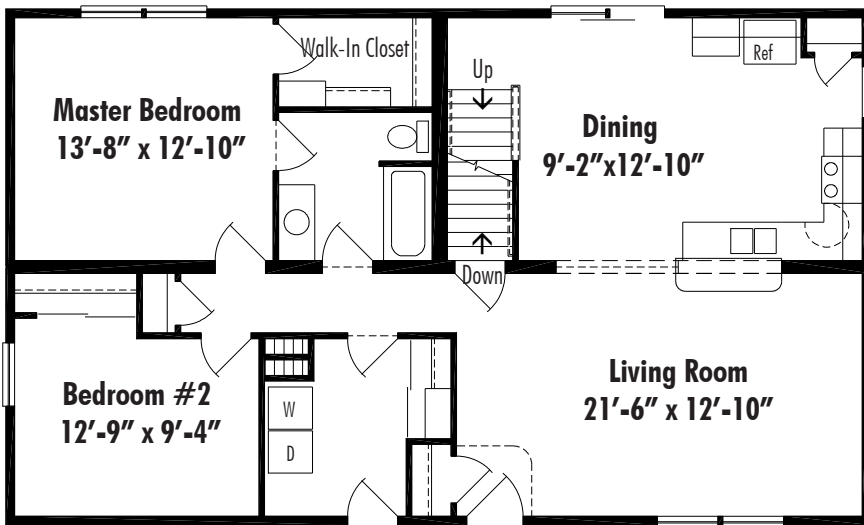


Kitchen D for Exeter C

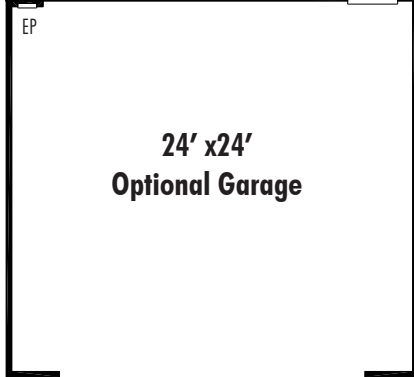




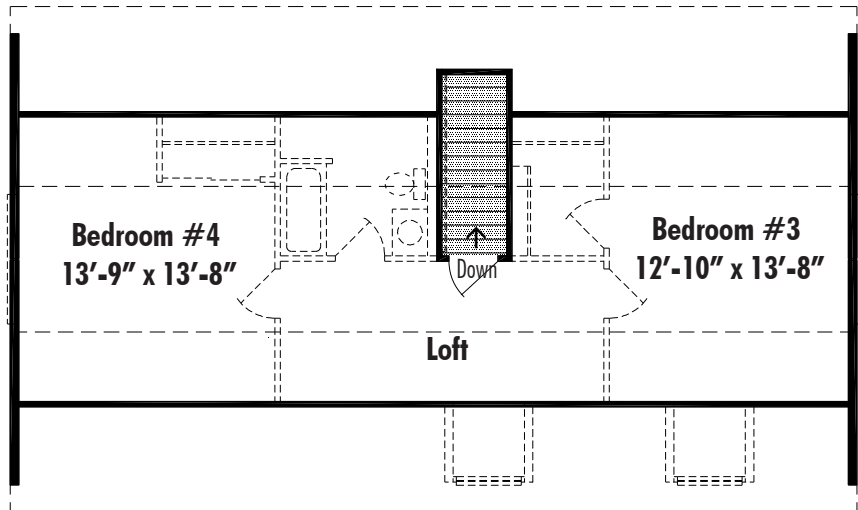
Master Bath Option EXB1



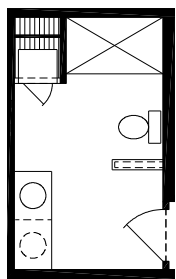
Kitchen D for Exeter B



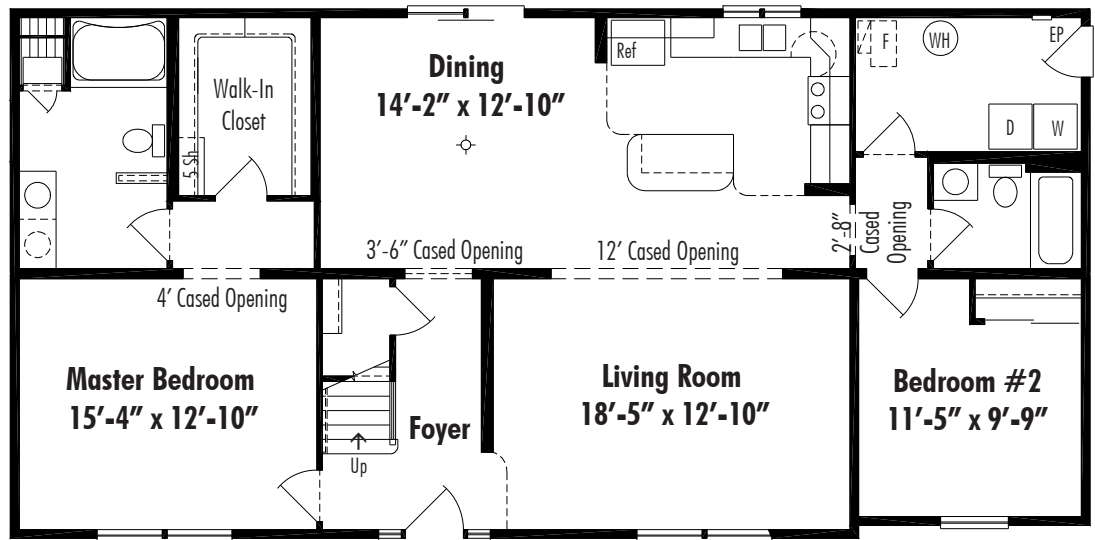
Exeter B Crawl Space 27'-4" x 46',
First Floor Living Area 1257 Sq. Ft.



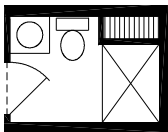
Fairchild I Crawl Space Plan



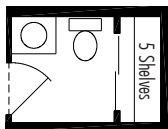
Master Bath Option FCBI
5' Shower



Fairchild I C Crawl Space 27'-4" x 56', First Floor Living Area 1522 Sq. Ft.



Hall Bath Option FCH1
4' Shower



Hall Bath Option FCH2
Linen Closet

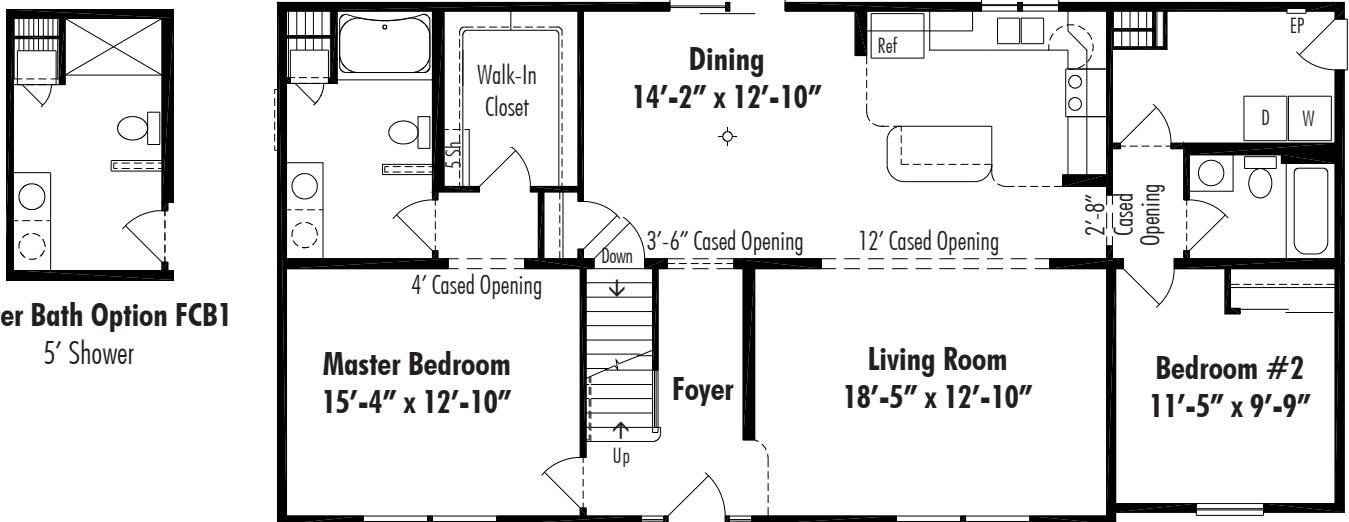


FCG1 Great Room Opening



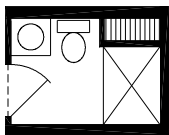
FCC1 6' Cased Opening

Fairchild I Basement Plan

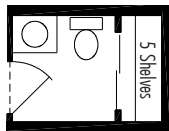


Master Bath Option FCB1
5' Shower

Fairchild I D Basement 27'-4" x 56', First Floor Living Area 1522 Sq. Ft.



Hall Bath Option FCH1
4' Shower



Hall Bath Option FCH2
Linen Closet



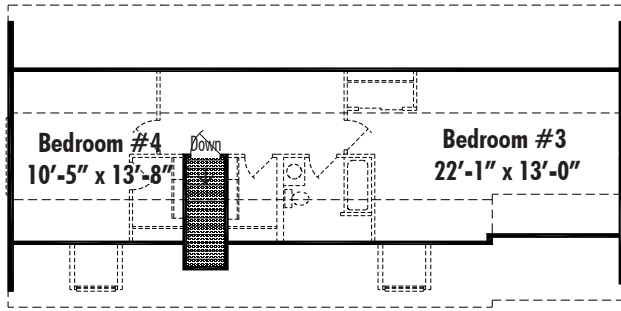
FCG1 Great Room Opening



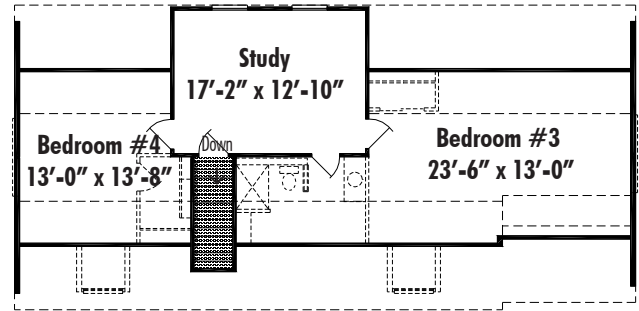
FCC1 6' Cased Opening

Suggested Layout for Fairchild I Second Floor

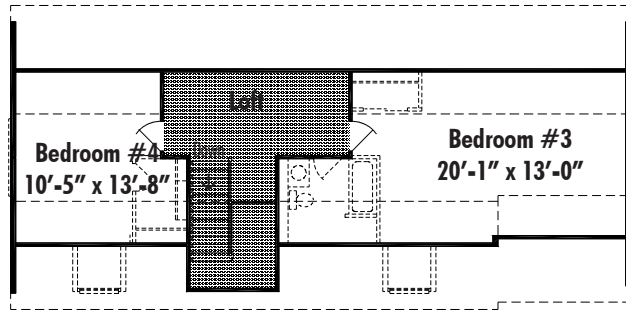
Note: The Second Floor of All Cape Style Homes is Unfinished Space. Shading on the Second Floor Represents Finished Space.



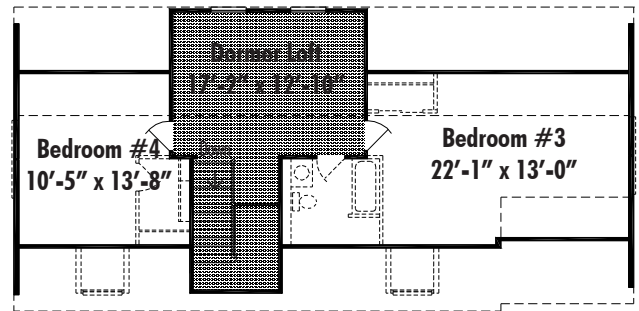
Layout A Front Stairwell
Second Floor Living Area 862 Sq. Ft.



Layout B Front Stairwell with Study
Second Floor Living Area 963 Sq. Ft.



Layout C Front Balcony with Loft
Second Floor Living Area 848 Sq. Ft.



Layout D Front Balcony with Dormer Loft
Second Floor Living Area 950 Sq. Ft.



Elevation #9 Twin Windows with Double Sidelites
(Shown with Optional A Style Dormers)



Elevation #10 Twin Full View Windows with Double Sidelites
(Shown with Optional A Style Dormers)

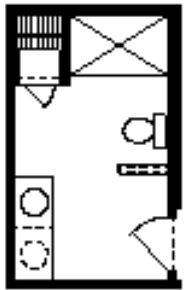


Elevation #11 Split Windows with Double Sidelites
(Shown with Optional A Style Dormers)

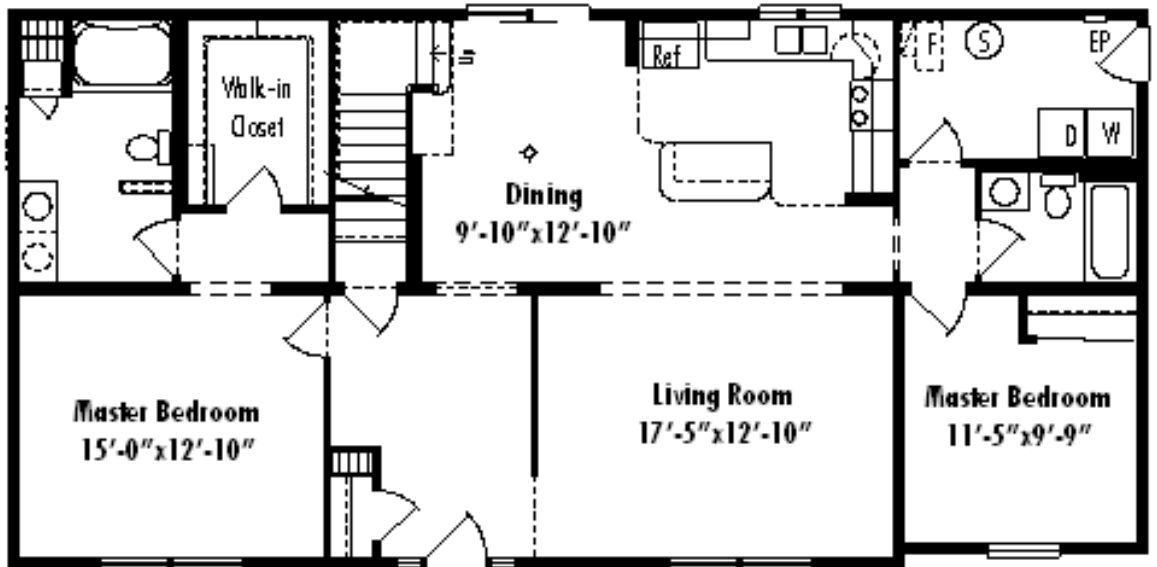


Elevation #12 Split Full View Windows with Double Sidelites
(Shown with Optional A Style Dormers)

Fairfax I Crawl Space Plan Plan



Master Bath Option FFBI
5' Shower



Fairfax I Crawl Space 27'-4" x 56', First Floor Living Area 1522 Sq. Ft.



Hall Bath Option FFH1
4' Shower



Hall Bath Option FFH2
Linen Closet

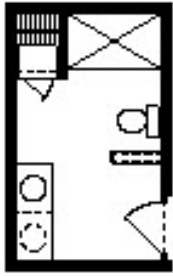


FFG1 Great Room Opening

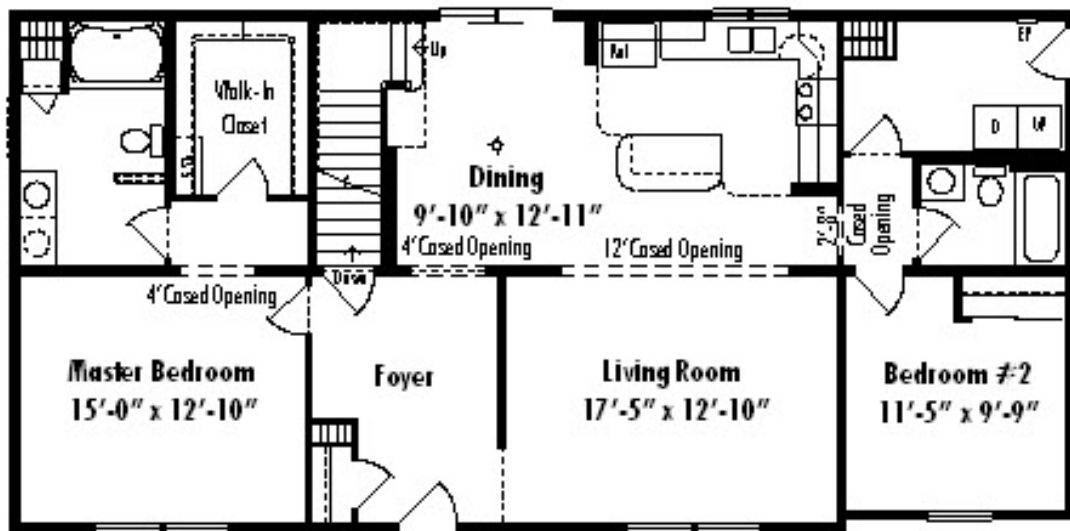


FCC1 6' Cased Opening

Fairfax I Basement Plan Plan



Master Bath Option FFBI
5' Shower



Fairfax I D Basement 27'-4" x 56', First Floor Living Area 1522 Sq. Ft.



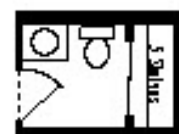
FFBI Great Room Opening



FFBI 6' Casings Opening



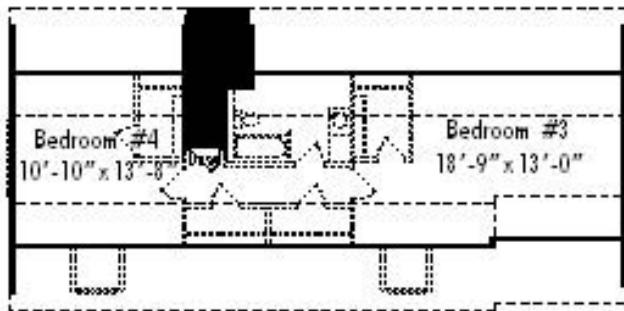
Hall Bath Option FFH1
4' Shower



Hall Bath Option FFH2
Linen Closet

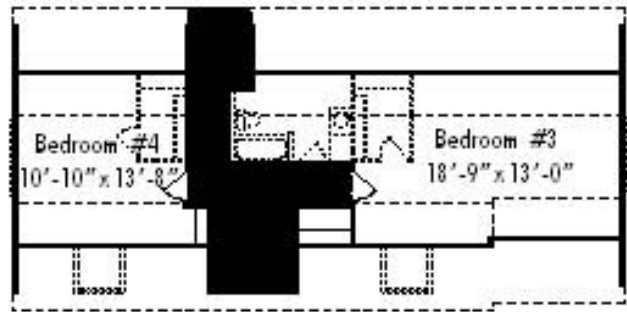
Suggested Layout for Fairfax I Second Floor

Note: The Second Floor of All Cape Style Homes is Unfinished Space. Shading on the Second Floor Represents Finished Space.



Layout A Rear Stairs

Second Floor Living Area 863 Sq. Ft.



Layout C Front Balcony

Second Floor Living Area 838 Sq. Ft.



Bevaton #9 Twin Windows with Double Sidelites
(Shown with Optional A Style Damers)



Bevaton #10 Twin Full View Windows with Double Sidelites
(Shown with Optional A Style Damers)

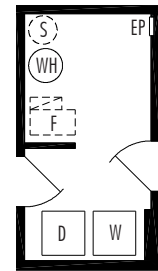
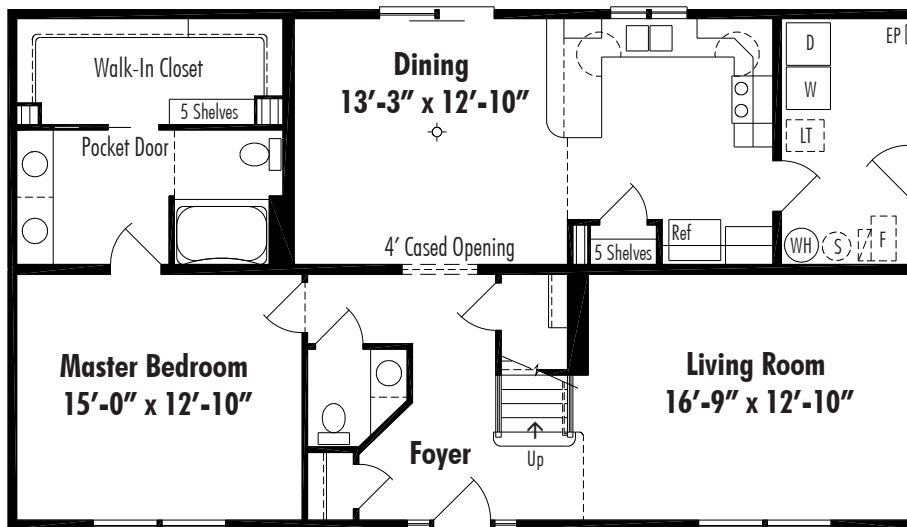


Bevaton #11 Split Windows with Double Sidelites
(Shown with Optional A Style Damers)



Bevaton #12 Split Full View Windows with Double Sidelites
(Shown with Optional A Style Damers)

Hartford Crawl Space Plan

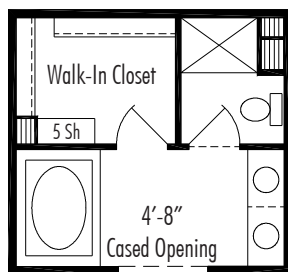


Utility Option HFU1
Alternate Utility Arrangement
(Crawl Space Plan Only)

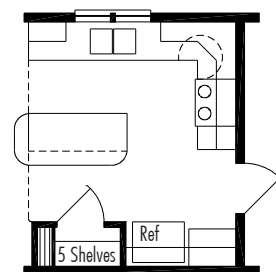
Hartford C Crawl Space 27'-4" x 48', First Floor Living Area 1312 Sq. Ft.

Walk-In Closet Walk-In Closet

Master Bath Option HFB1
Separate Walk-in Closets

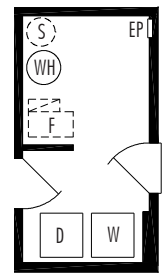
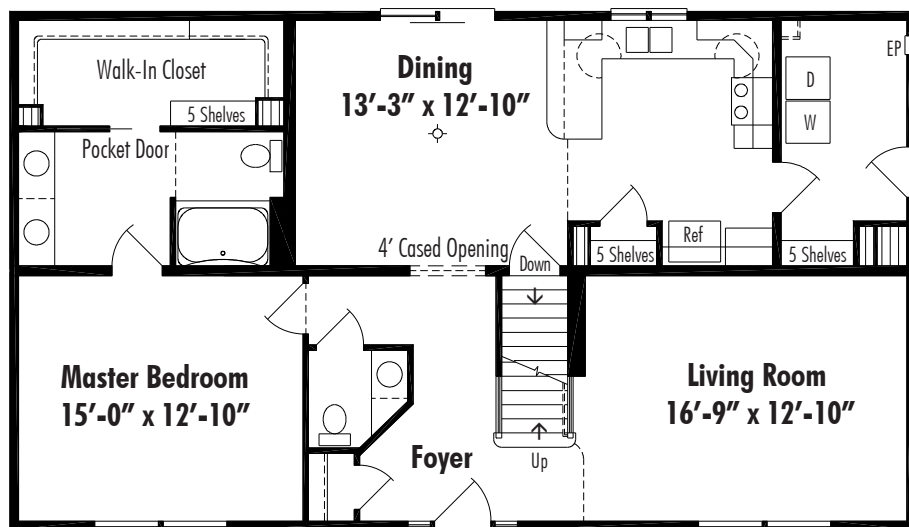


Master Bath Option HFB2
Roman Tub



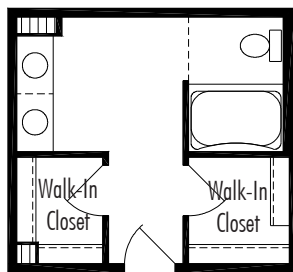
Kitchen Option HT2
Island Kitchen

Hartford Basement Plan

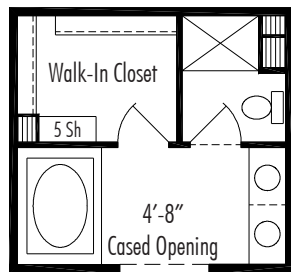


Utility Option HFU1
Alternate Utility Arrangement
(Crawl Space Plan Only)

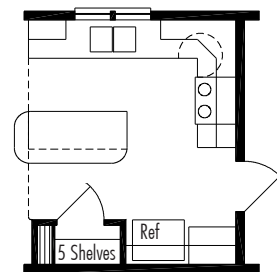
Hartford B Basement 27'-4" x 48', First Floor Living Area 1312 Sq. Ft.



Master Bath Option HFB1
Separate Walk-in Closets



Master Bath Option HFB2
Roman Tub

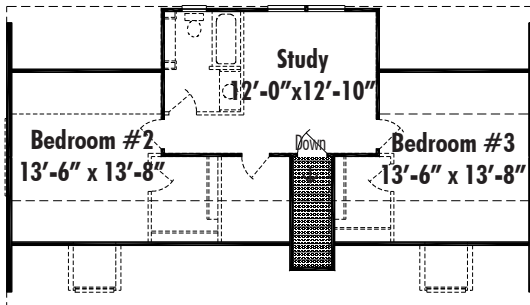


Kitchen Option HT2
Island Kitchen



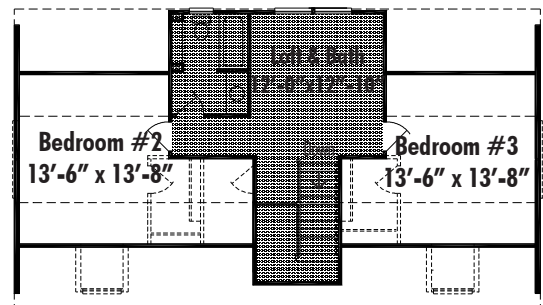
Suggested Layout for Hartford Second Floor

Note: The Second Floor of All Cape Style Homes is Unfinished Space. Shading on the Second Floor Represents Finished Space.



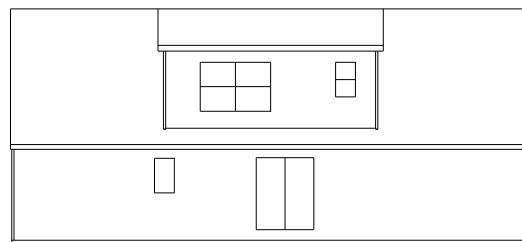
Layout B Front Stairwell with Study

Second Floor Living Area 852 Sq. Ft.



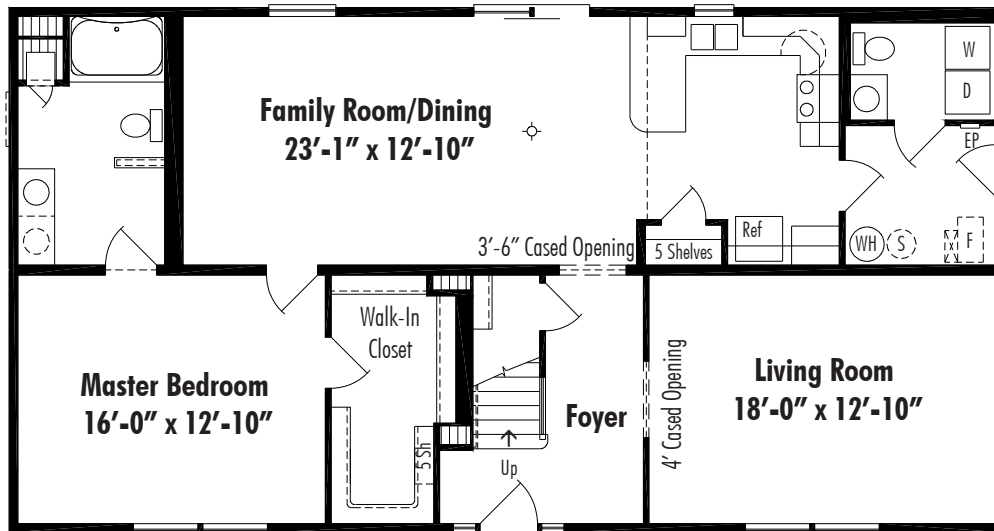
Layout D Front Balcony with Loft and Bath

Second Floor Living Area 839 Sq. Ft.

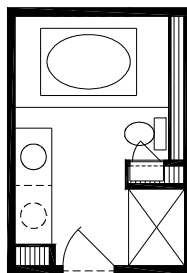


Rear Dormer Elevation

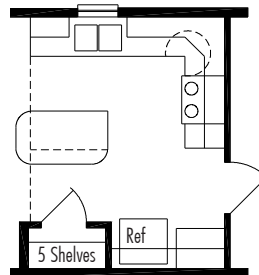
Lexington Crawl Space Plan



Lexington C Crawl Space 27'-4" x 52', First Floor Living Area 1421 Sq. Ft.

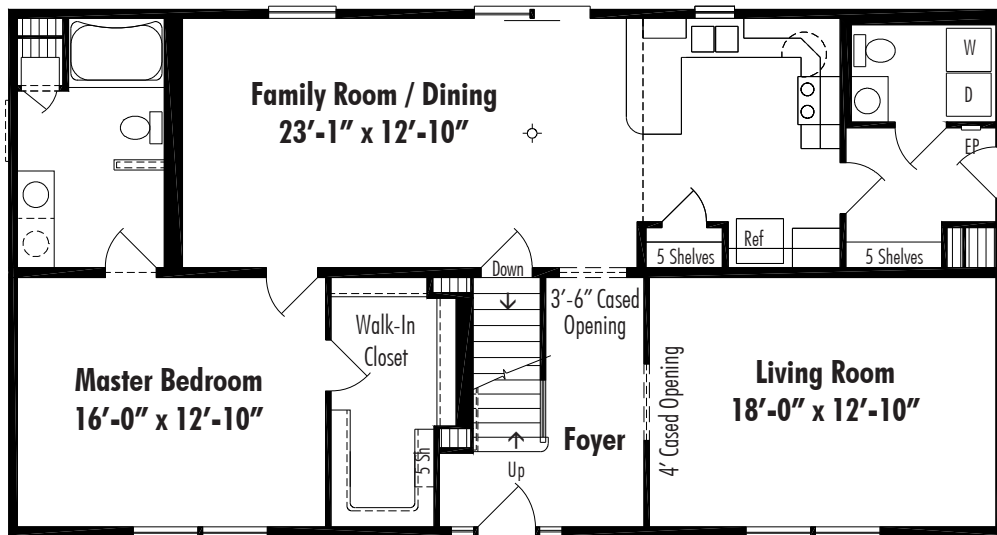


Master Bath Option LXB1
Roman Tub and 4' Shower
(Reduces Family Room by 4")

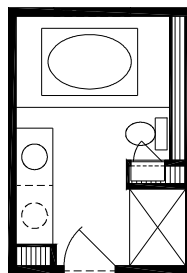


Kitchen Option B
Island Kitchen

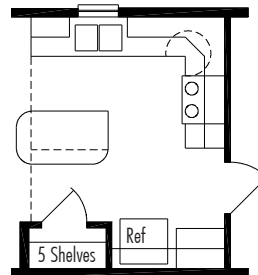
Lexington Basement Plan



Lexington B Basement 27'-4" x 52', First Floor Living Area 1421 Sq. Ft.



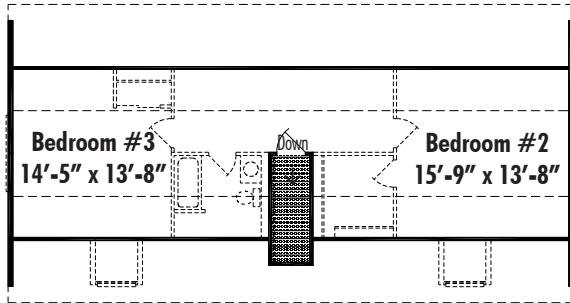
Master Bath Option LXB1
Roman Tub and 4' Shower
(Reduces Family Room by 4")



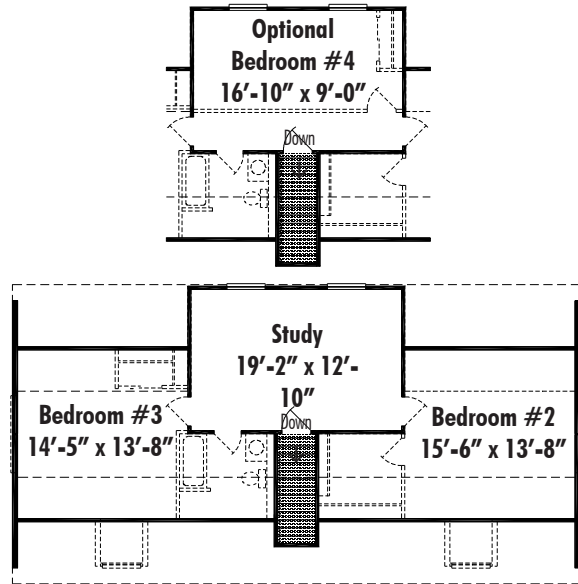
Kitchen Option B
Island Kitchen

Suggested Layout for Lexington Second Floor

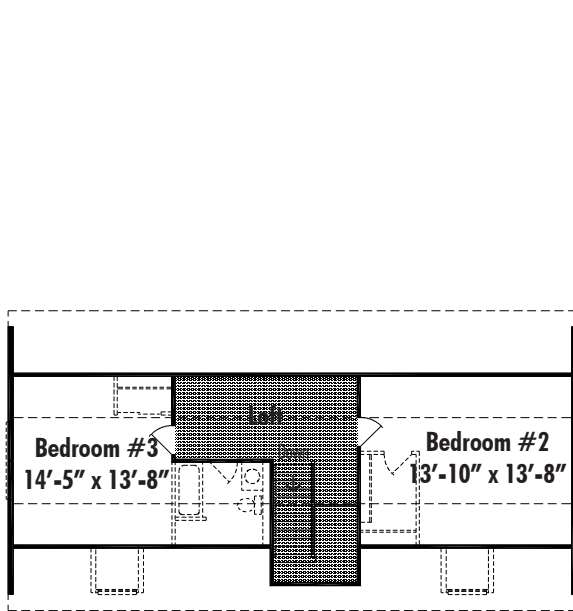
Note: The Second Floor of All Cape Style Homes is Unfinished Space. Shading on the Second Floor Represents Finished Space.



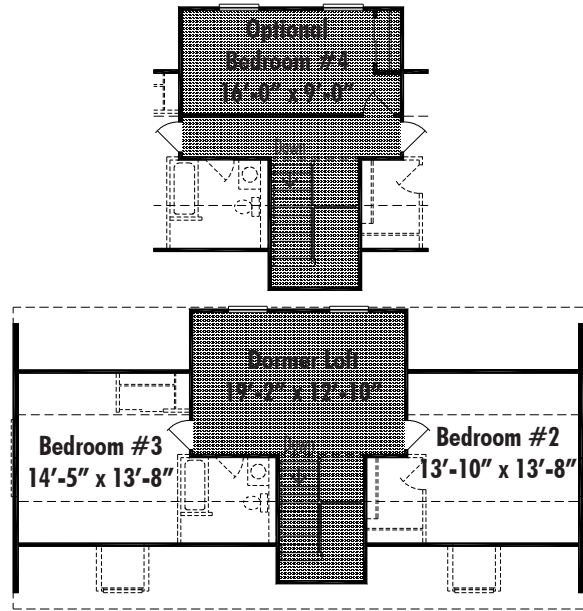
Layout A Front Stairwell
Second Floor Living Area 806 Sq. Ft.



Layout B Front Stairwell with Study
Second Floor Living Area 916 Sq. Ft.

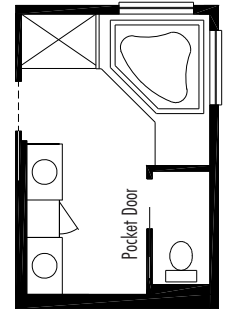
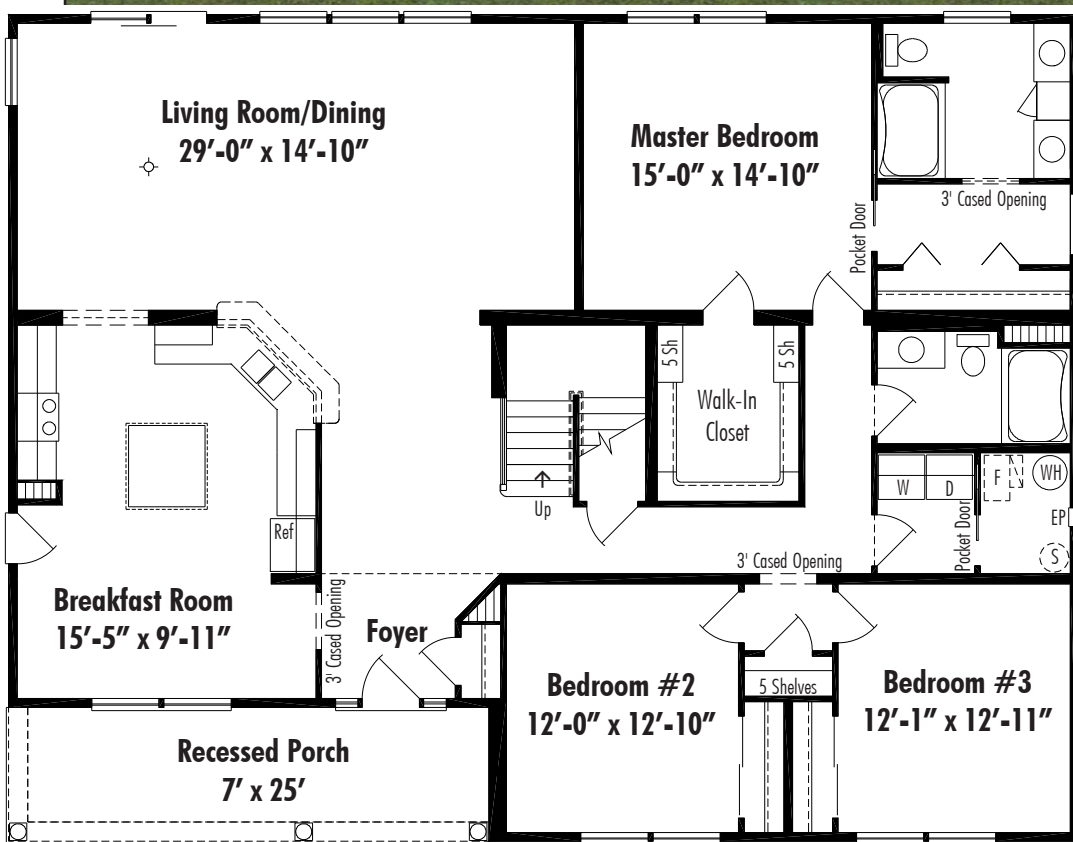


Layout C Front Balcony with Loft
Second Floor Living Area 792 Sq. Ft.



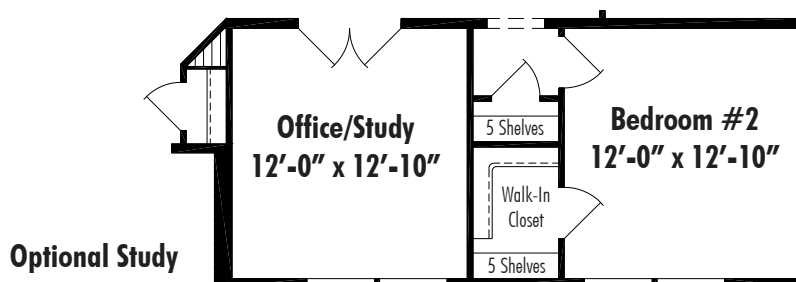
Layout D Front Balcony with Dormer Loft
Second Floor Living Area 903 Sq. Ft.

Modesto Crawl Space Plan

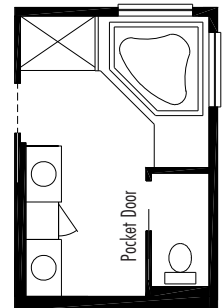
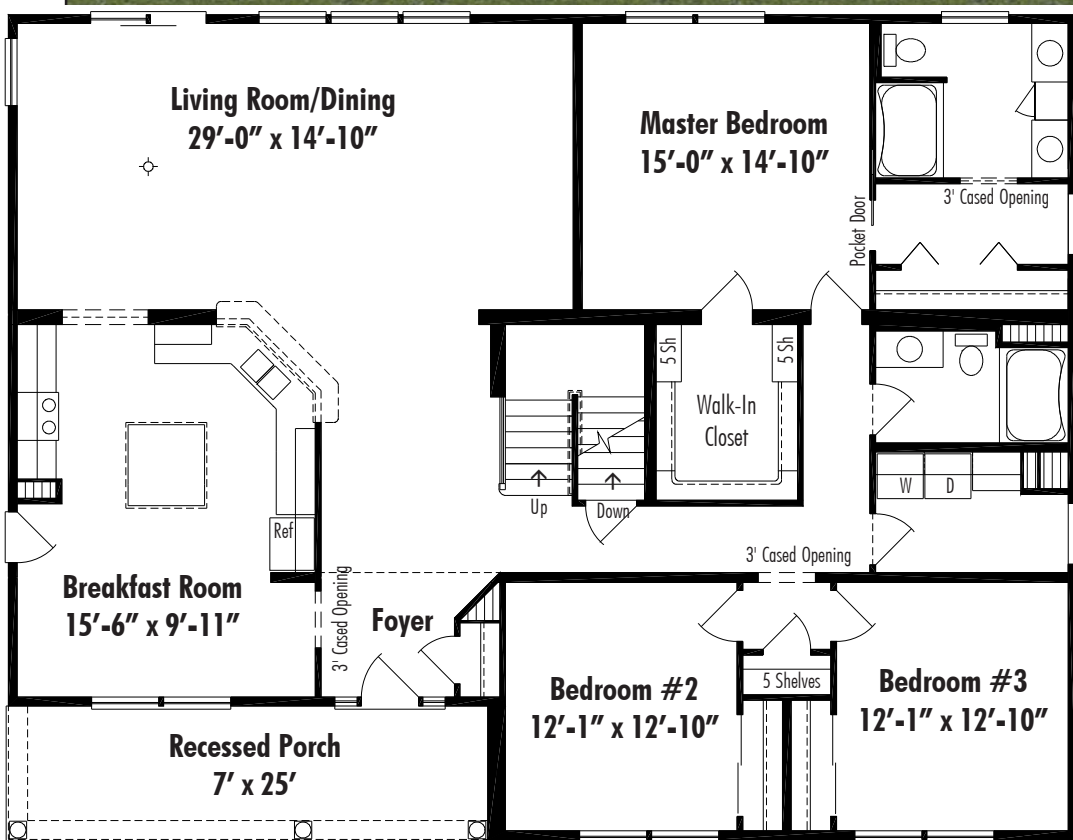


Master Bath Option MDM1

Modesto C
Crawl Space 43' x 56'
2232 Sq. Ft. Living Area

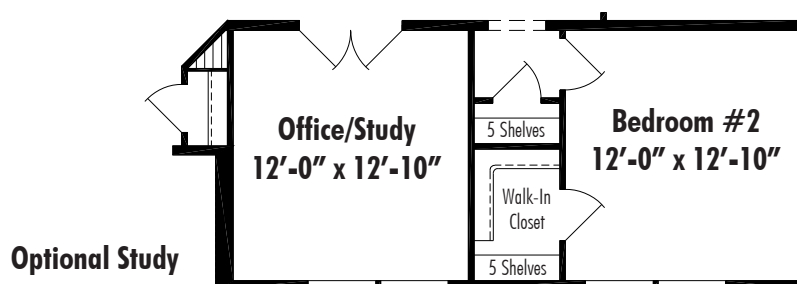


Modesto Basement Plan



Master Bath Option MDM1

Modesto B Basement 43' x 56'
2232 Sq. Ft. Living Area

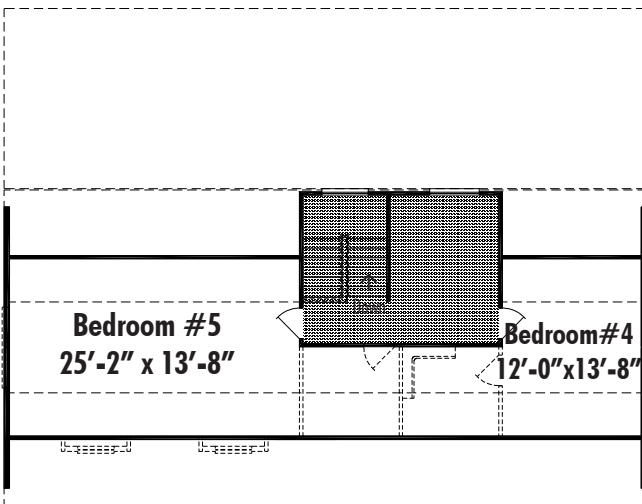


Optional Study

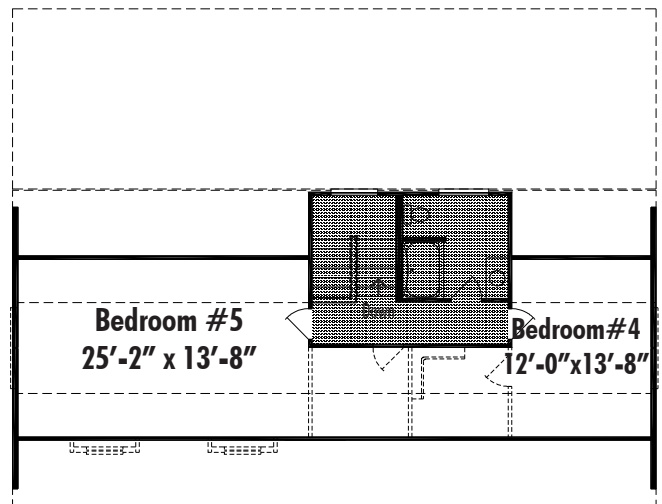


Suggested Layout for Modesto Second Floor

Note: The Second Floor of All Cape Style Homes is Unfinished Space. Shading on the Second Floor Represents Finished Space.

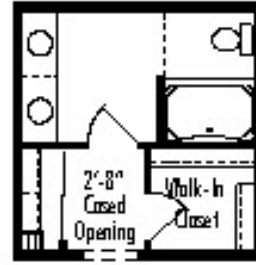


Layout A Second Floor Living Area 953 Sq. Ft.

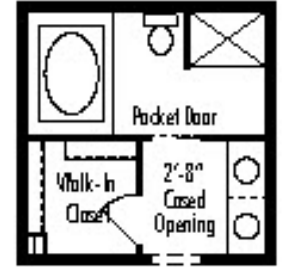


Layout D Second Floor Living Area 953 Sq. Ft.

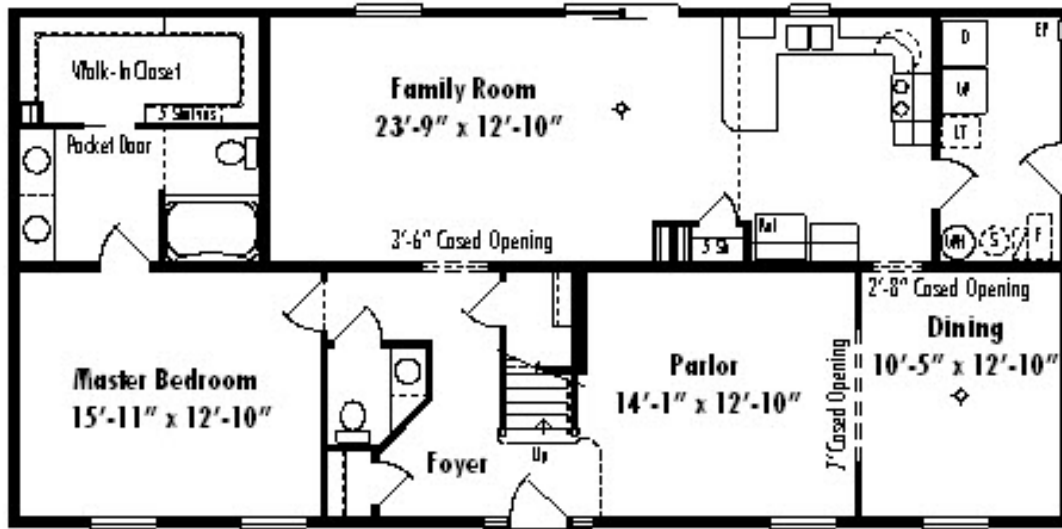
New Haven Crawl Space Plan



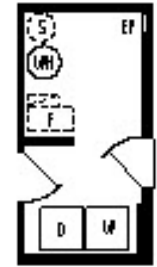
Master Bath Option MHB1
Alternate Arrangement



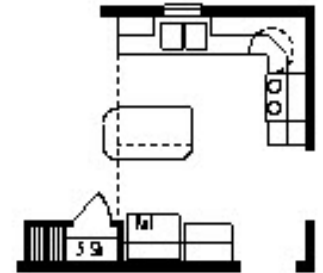
Master Bath Option MHB2
Roman Tub with Shower



New Haven C Crawl Space 27'-4" x 56", First Floor Living Area 1531 Sq. Ft.



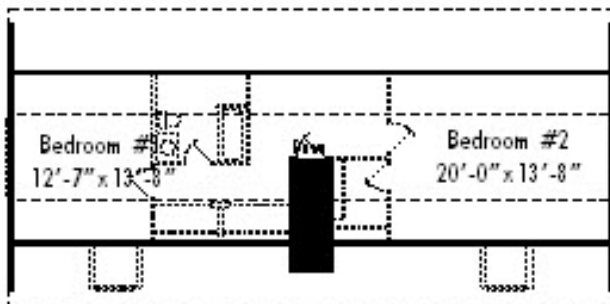
Utility Option MHU1
Alternate Utility Arrangement
(Crawl Space Plan Only)



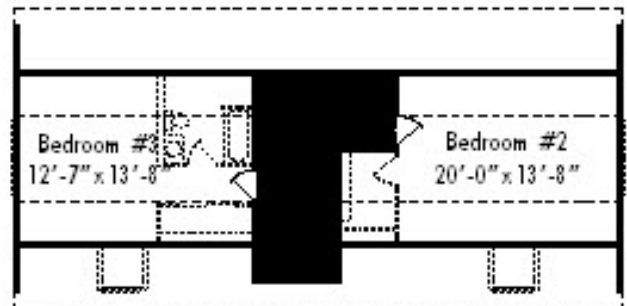
Kitchen Option B
Island Kitchen

Suggested Layout for New Haven Second Floor

Note: The Second Floor of All Cape Style Homes is Unfinished Space. Shading on the Second Floor Represents Finished Space.

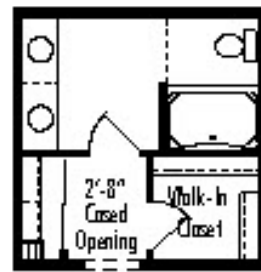


Layout A Front Stairwell
Second Floor Living Area 870 Sq. Ft.

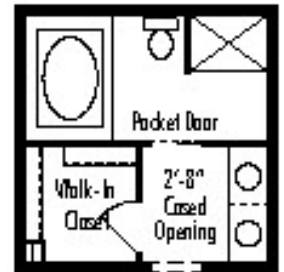


Layout C Front Balcony with Loft
Second Floor Living Area 858 Sq. Ft.

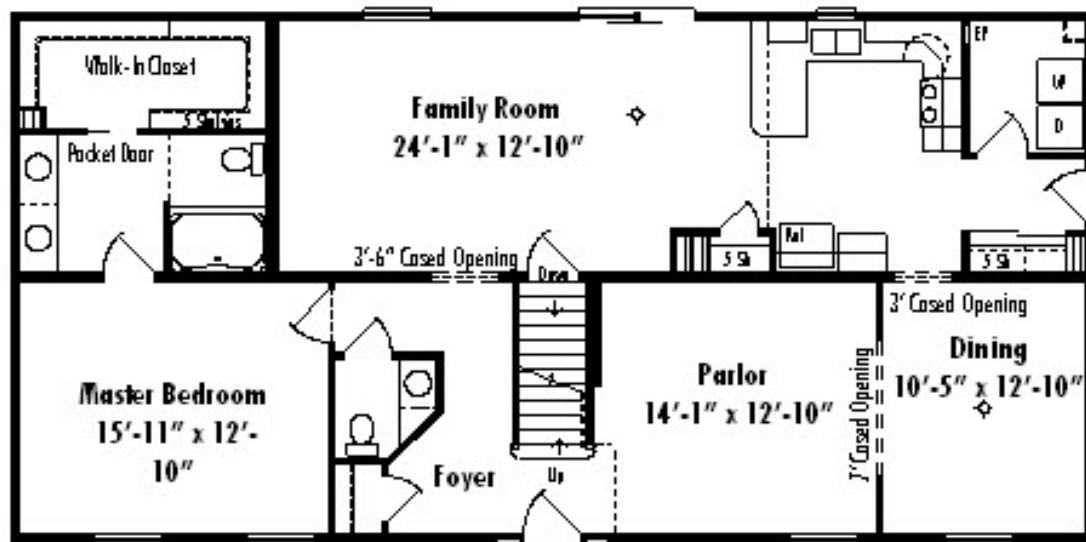
New Haven Basement Plan



Master Bath Option MHB1
Alternate Arrangement



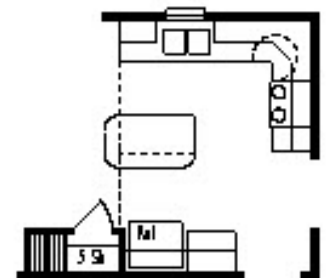
Master Bath Option MHB2
Roman Tub with Shower



New Haven B Basement 27'-4" x 56", First Floor Living Area 1531 Sq. Ft.



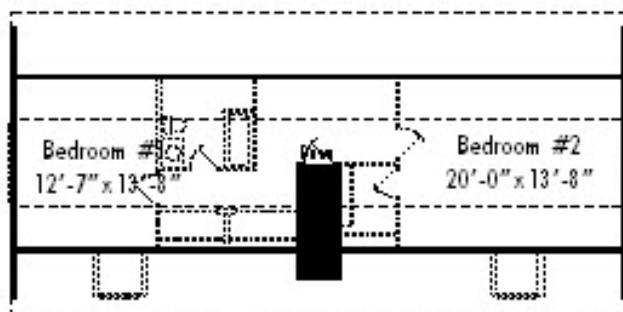
Utility Option NHU1
Alternate Utility Arrangement
(Crawl Space Plan Only)



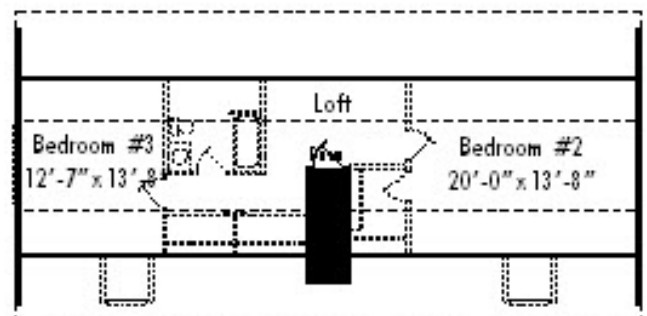
Kitchen Option B
Island Kitchen

Suggested Layout for New Haven Second Floor

Note: The Second Floor of All Cape Style Homes is Unfinished Space. Shading on the Second Floor Represents Finished Space.



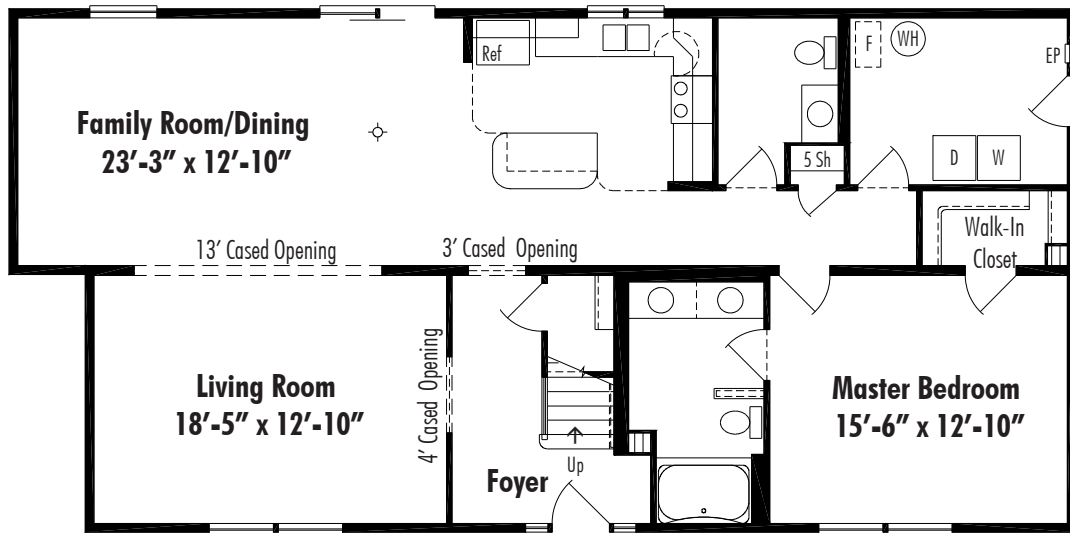
Layout A Front Stairwell
Second Floor Living Area 870 Sq. Ft.



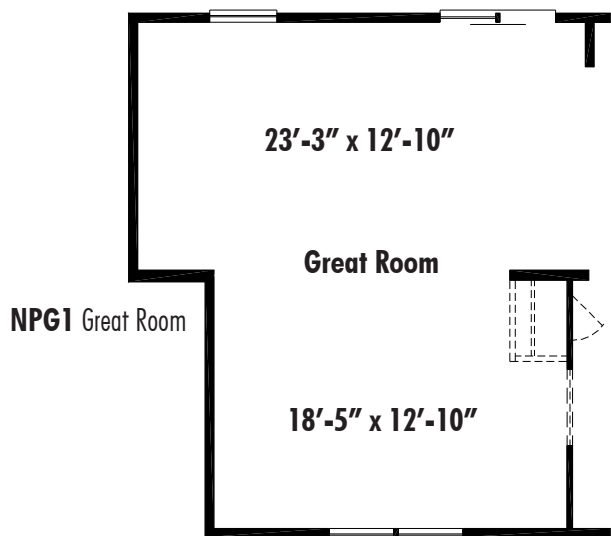
Layout C Front Balcony with Loft
Second Floor Living Area 858 Sq. Ft.

Newport

Crawl Space Plan

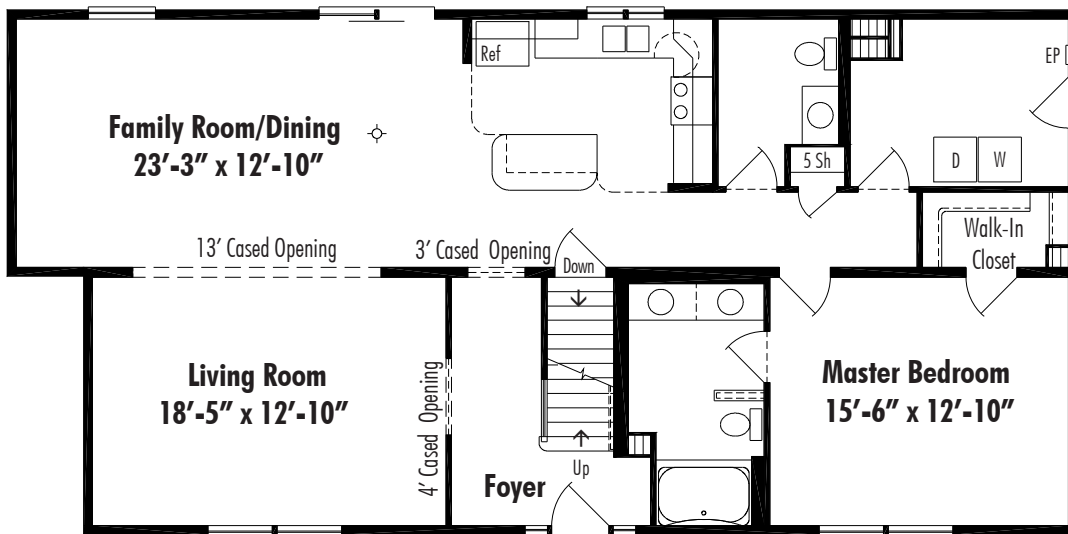


Newport C Crawl Space 27'-4" x 52/56', First Floor Living Area 1476 Sq. Ft.

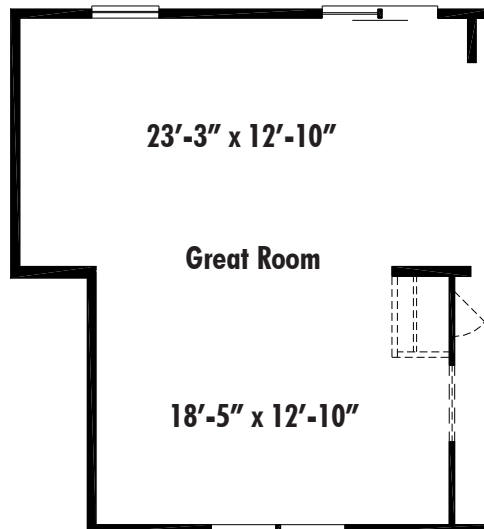


Newport

Basement Plan



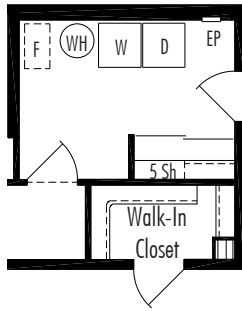
Newport B Basement 27'-4" x 52/56', First Floor Living Area 1476 Sq. Ft.



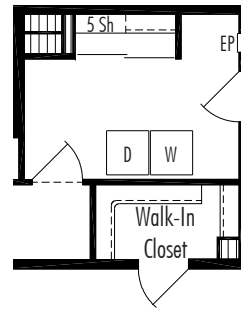
NPG1 Great Room

Options and Second Floor Layouts for Newport

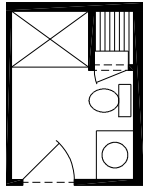
Note: The Second Floor of All Cape Style Homes is Unfinished Space. Shading on the Second Floor Represents Finished Space.



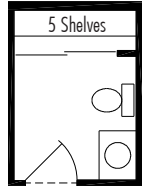
Utility Option NPU1
Utility Closet
(Crawl Space Plan Only)



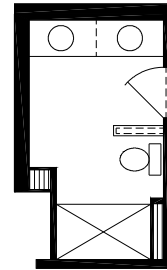
Utility Option NPU2
Utility Closet
(Basement Plan Only)



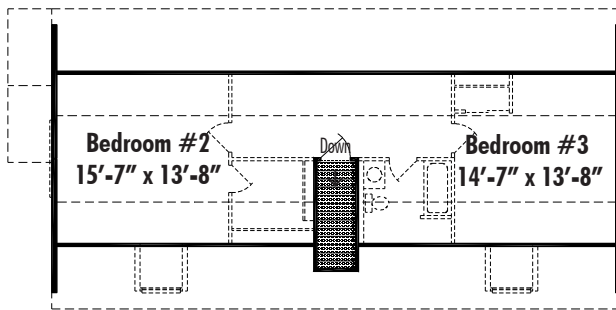
Hall Bath Option NPH1
4' Shower



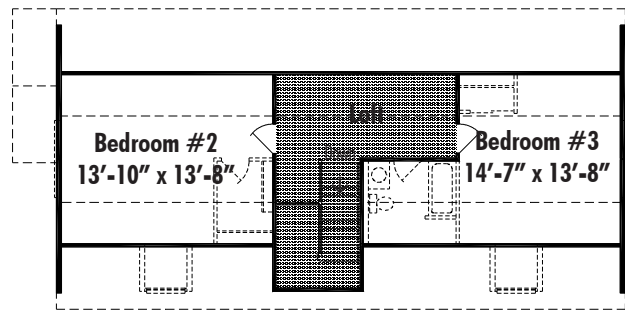
Hall Bath Option NPH2
Linen Closet



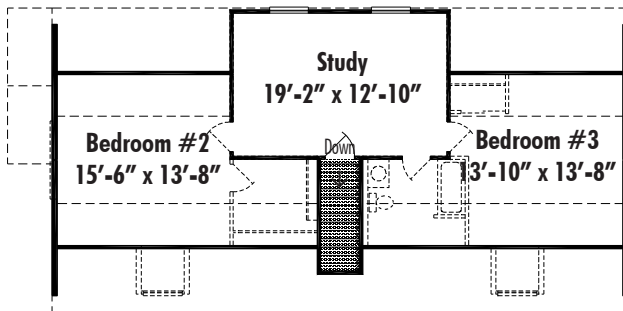
Master Option NPB1
5' Shower



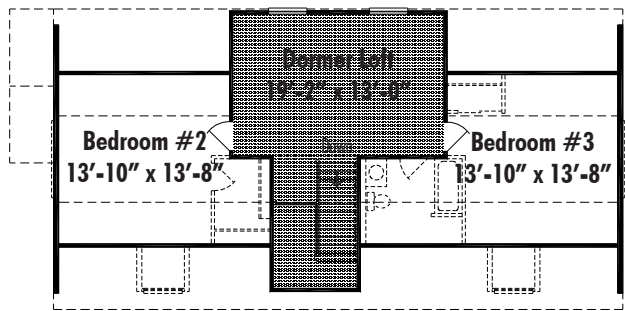
Layout A Front Stairwell
Second Floor Living Area 806 Sq. Ft.



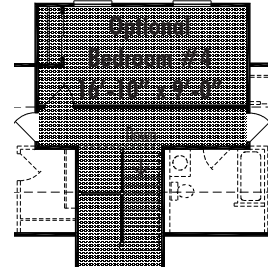
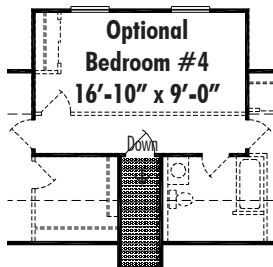
Layout C Front Balcony with Loft
Second Floor Living Area 792 Sq. Ft.



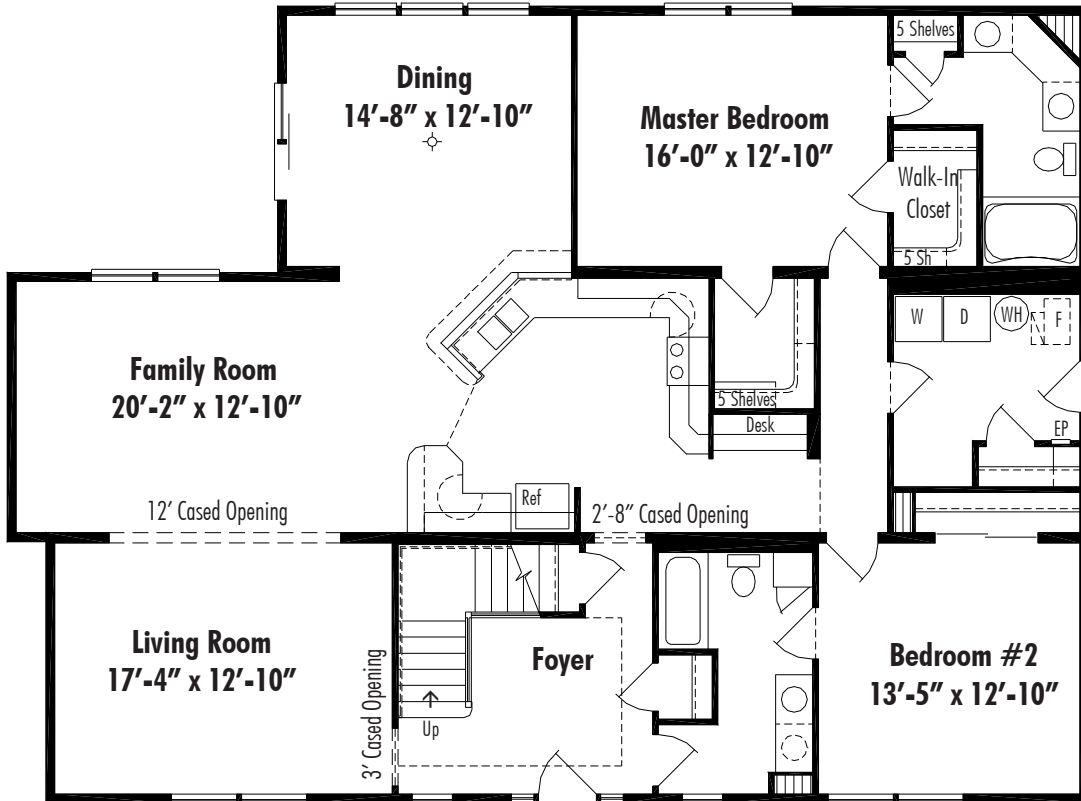
Layout B Front Stairwell with Study
Second Floor Living Area 916 Sq. Ft.



Layout D Front Balcony with Dormer Loft
Second Floor Living Area 903 Sq. Ft.

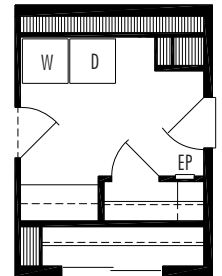
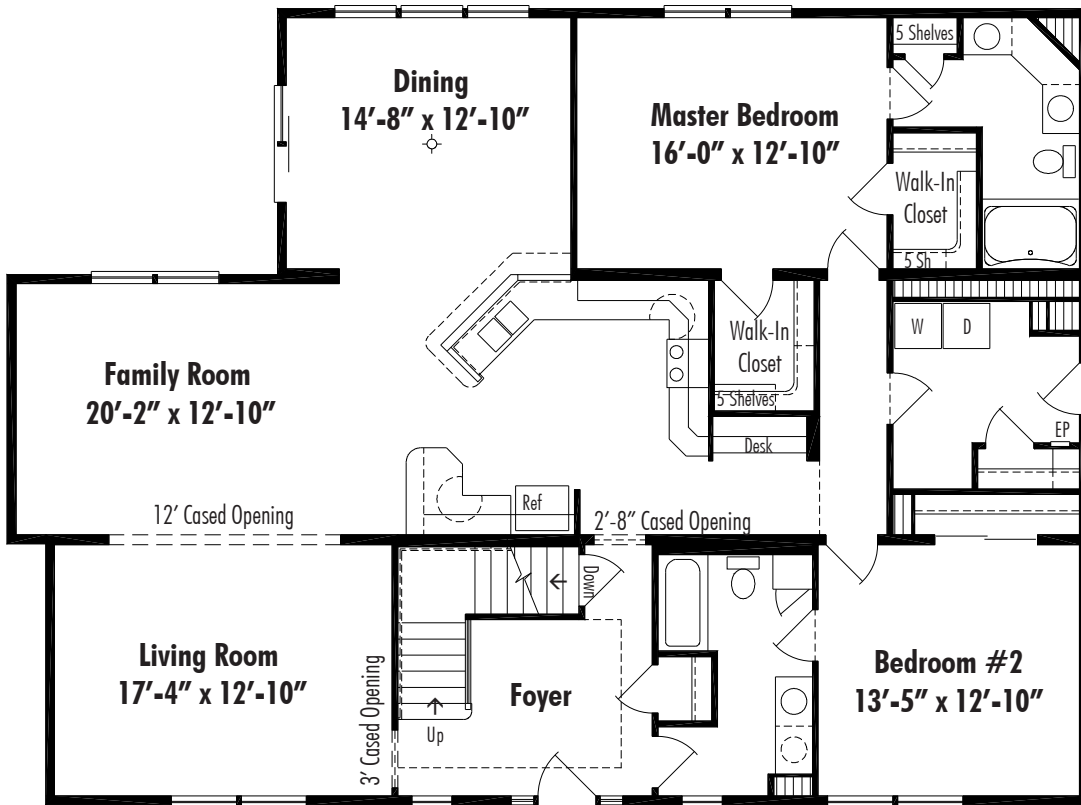


Rockport Crawl Space Plan



Rockport C Crawl Space 41' x 54'/56', First Floor Living Area 2077 Sq. Ft.

Rockport Basement Plan

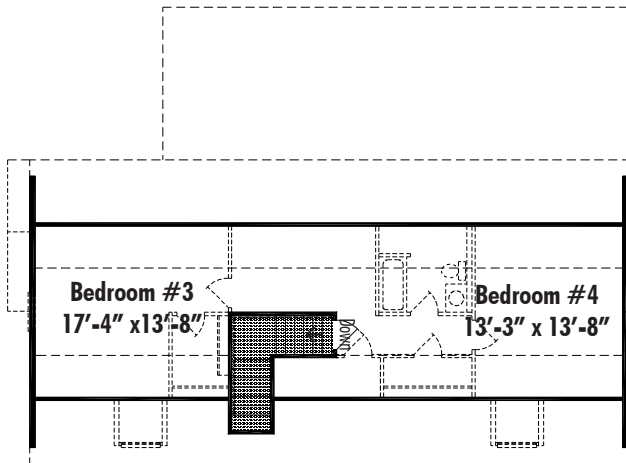


Utility Option RPU2
Utility with Cabinets
(Basement Plan)

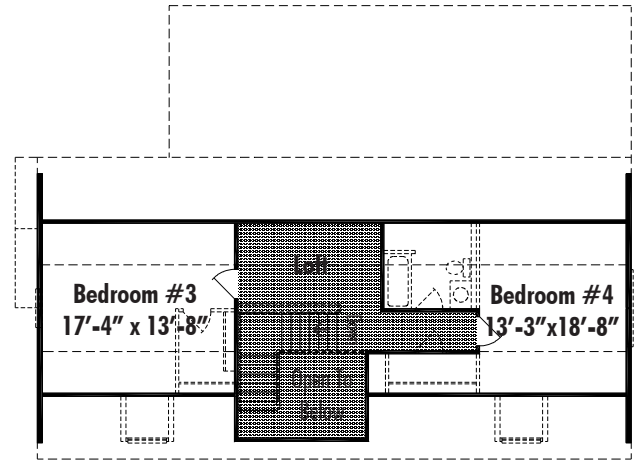
Rockport B Basement 41' x 54'/56', First Floor Living Area 2077 Sq. Ft.

Options and Second Floor Layouts for Rockport

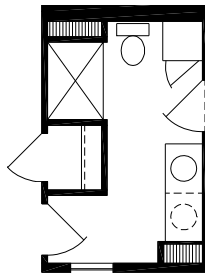
Note: The Second Floor of All Cape Style Homes is Unfinished Space. Shading on the Second Floor Represents Finished Space.



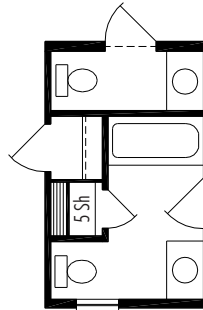
Layout A Front Stairwell Second Floor Living Area 818 Sq. Ft.



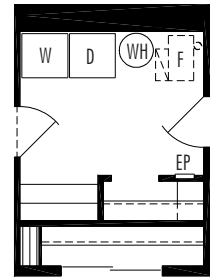
Layout C Front Balcony with Loft Second Floor Living Area 787 Sq. Ft.



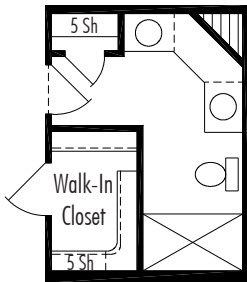
Hall Bath Option RPH1
4' Shower



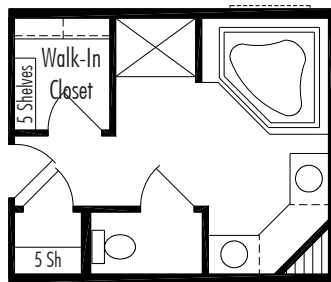
Hall Bath Option RPH2
Private Bath and Hall Half Bath



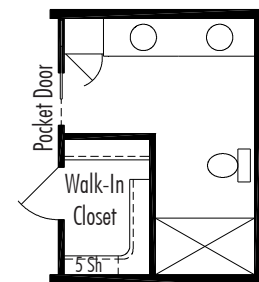
Utility Option RPU1
Utility with Cabinets
(Crawl Space Plan)



Master Bath Option RPB1
5' Shower

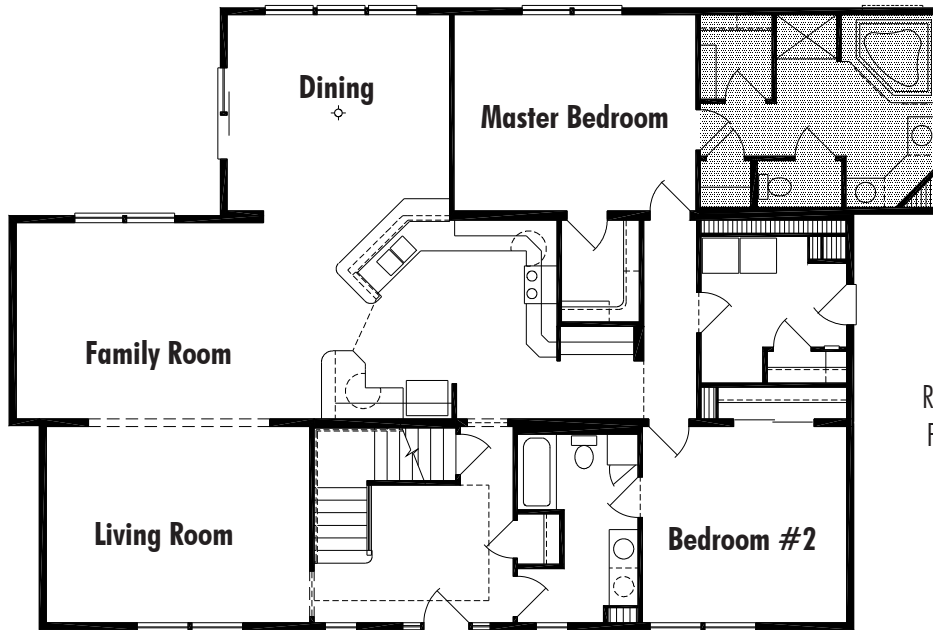


Master Bath Option RPB2
Corner Tub and 4' Shower
(Requires 6' Extension to Rear of Module)



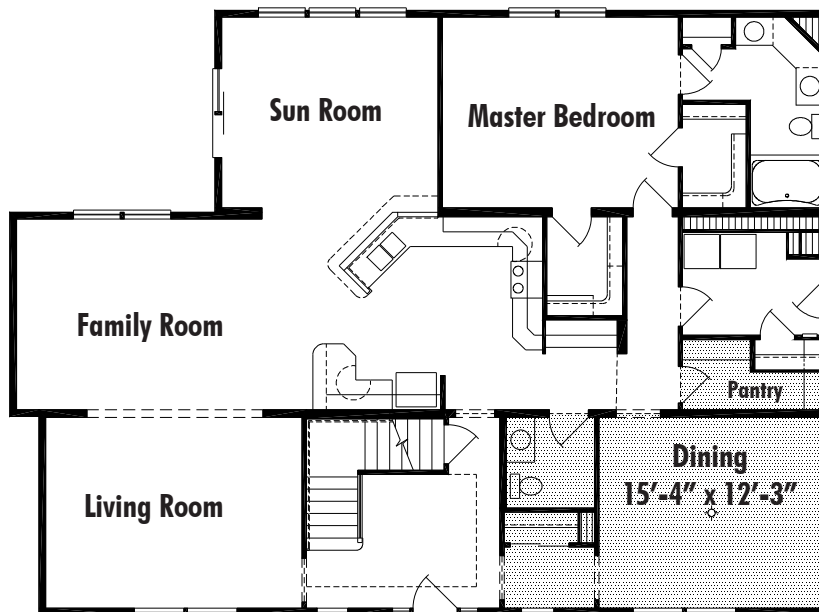
Master Bath Option RPB3
5' Shower, Pocket Door Entry

Rockport Options



Optional Garage
Requires 10/12 Garage Roof
Flush with Rear House Roof

RPB2 Roman Tub and 4' Shower (Requires 6' Extension to Rear of Module)



Dining Room Option RPDR
Formal Dining Room with Half Bath and Walk-In Pantry

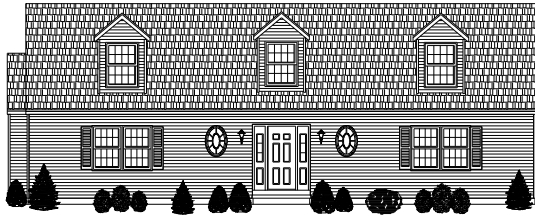
Rockport Elevations



Elevation #20 Twin Windows with Shutters and Casement Windows
(Shown with Optional A Style Dormers)



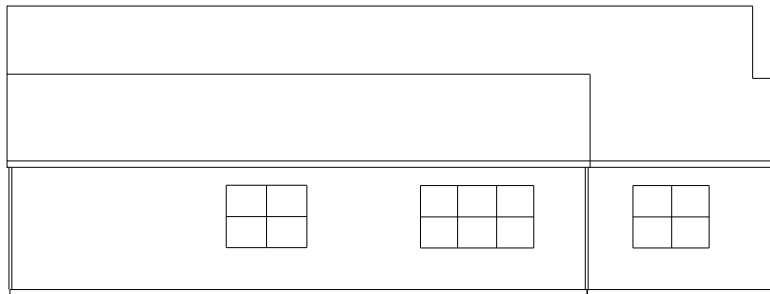
Elevation #21 Twin Full View Windows with Shutters and Casement Windows
(Shown with Optional A Style Dormers)



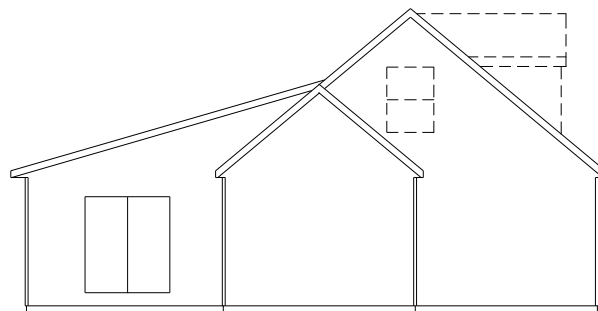
Elevation #22 Twin Windows with Shutters and Oval Windows
(Shown with Optional A Style Dormers and Optional Window Grilles)



Elevation #23 Twin Full View Windows with Shutters and Oval Windows
(Shown with Optional A Style Dormers and Optional Window Grilles)



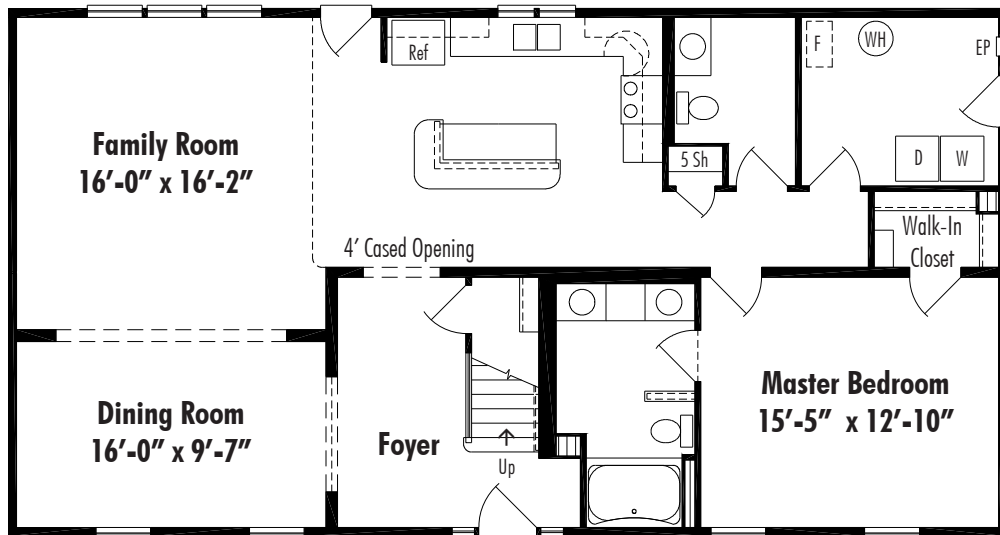
Rear Elevation



Left Side Elevation

Waterbury

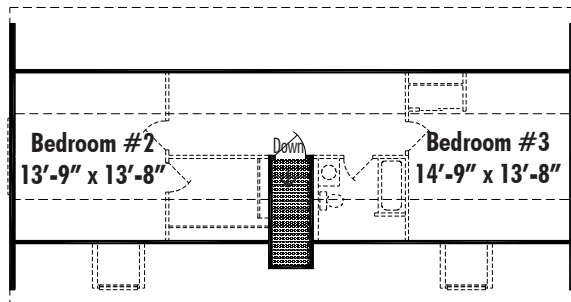
Crawl Space Plan



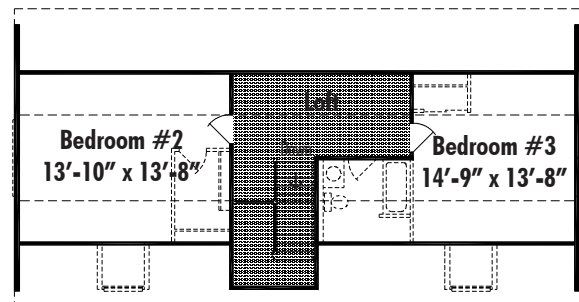
Waterbury C Crawl Space 27'-4" x 52', First Floor Living Area 1421 Sq. Ft.

Suggested Layout for Waterbury Second Floor

Note: The Second Floor of All Cape Style Homes is Unfinished Space. Shading on the Second Floor Represents Finished Space.



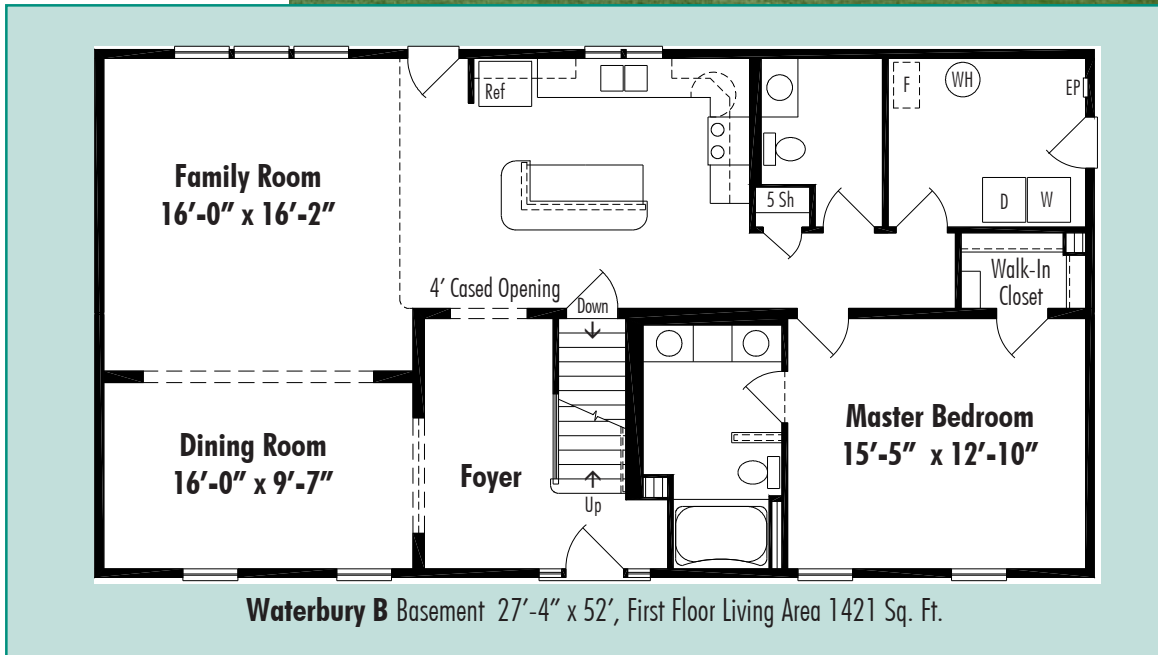
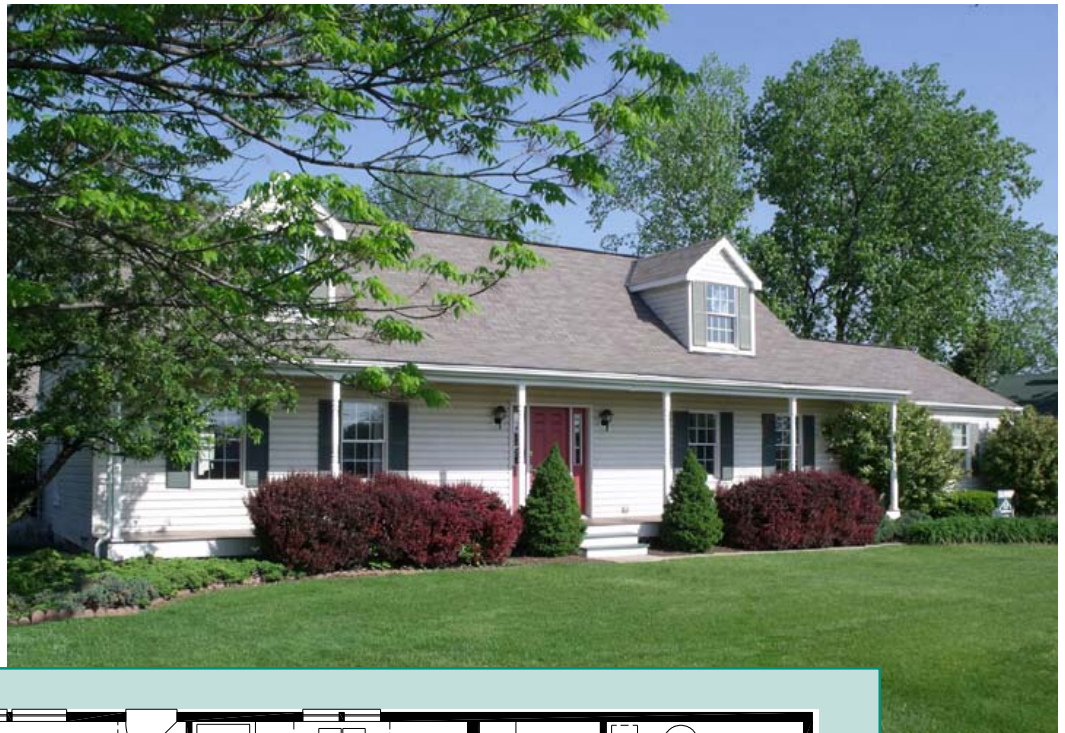
Layout A Front Stairwell Second Floor Living Area 806 Sq. Ft.



Layout C Front Balcony with Loft Second Floor Living Area 792 Sq. Ft.

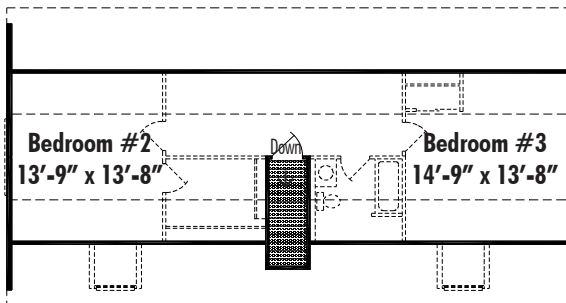
Waterbury

Basement Plan

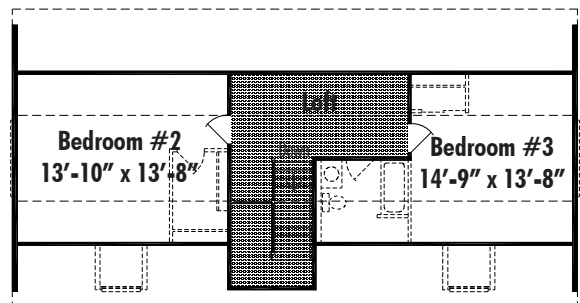


Suggested Layout for Waterbury Second Floor

Note: The Second Floor of All Cape Style Homes is Unfinished Space. Shading on the Second Floor Represents Finished Space.

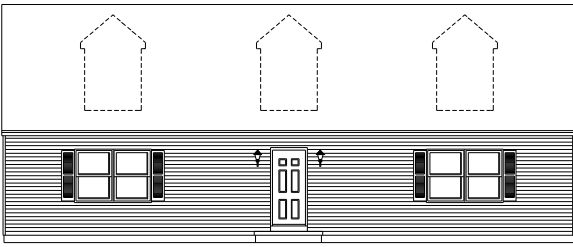


Layout A
Front Stairwell
 Second Floor Living Area 806 Sq. Ft.

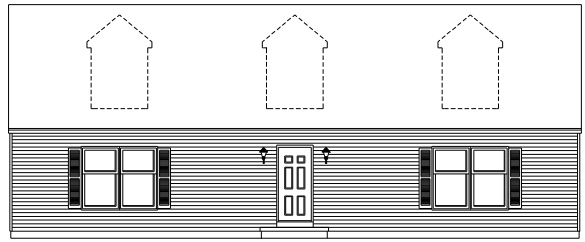


Layout C
Front Balcony with Loft
 Second Floor Living Area 792 Sq. Ft.

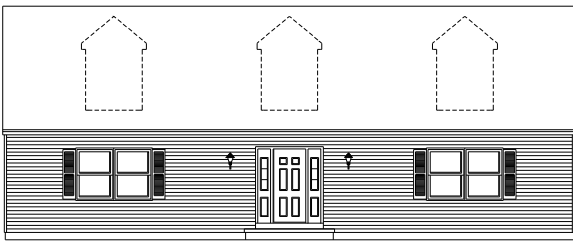
Front Elevations



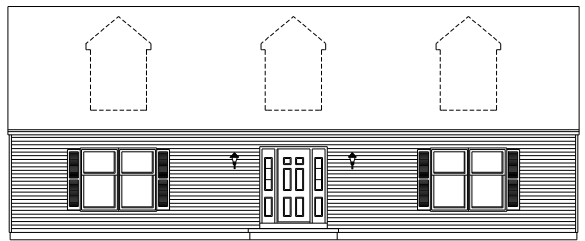
Elevation #1 Twin Windows



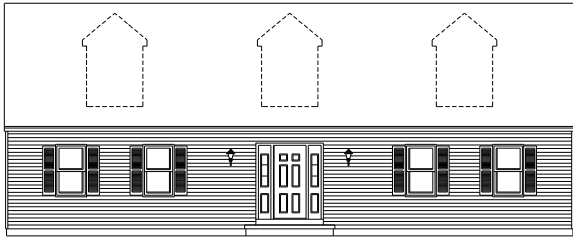
Elevation #2 Twin Full View Windows



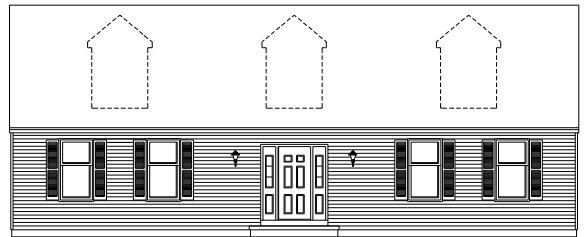
Elevation #3 Twin Windows with Double Sidelites



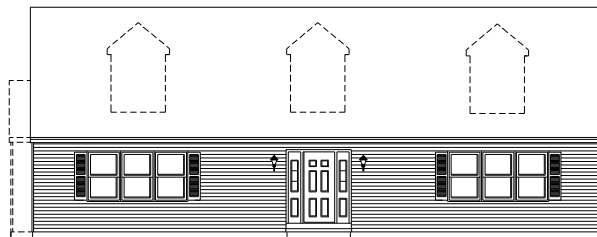
Elevation #4 Twin Full View Windows with Double Sidelites



Elevation #5 Split Windows with Double Sidelites

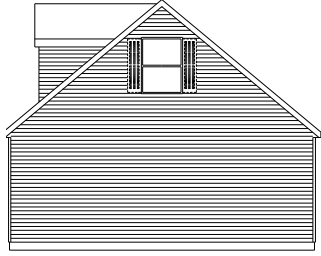


Elevation #6 Split Full View Windows with Double Sidelites

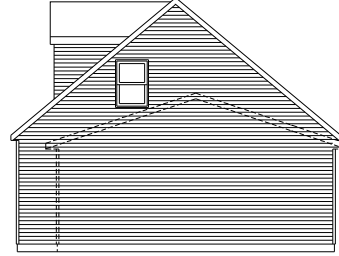


Elevation #7 Triple Windows with Double Sidelites

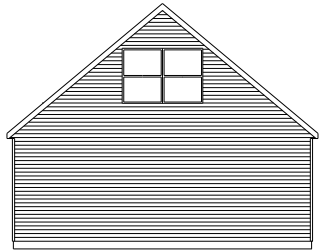
Gable Window Arrangement



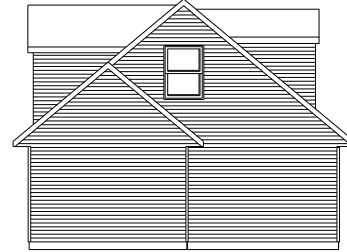
One 3446 Window
Shown with Optional Shutters



One 28310 Window
Window location with attached garage, (4/12 Roof Pitch)

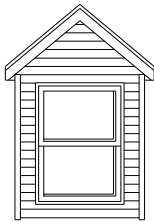


Two 3446 Windows

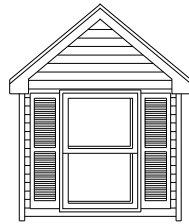


One 3446 Window Location with Room Extension

Dormer Styles



Dormer Style A



Dormer Style H



Dormer Style J1
Shown with
(4) Optional Grilles



Dormer Style J2
Shown with
(2) Optional Grilles

Dormer Styles	Window	Roof Pitch	Inside Width	Side Walls
A	3446	10/12	3'-9"	2"x6"
H	3046	10/12	5'-4"	2"x4"
J1	CTCXW1 / CR14 / P3040 / CR14	10/12	6'-10"	2"x6"
J2	CTC2 / P4035	10/12	6'-10"	2"x6"

All dormers include 3/4" exterior foam sheathing.

Cape Cod Specifications

Floors

2 x 10 Floor Joist 16" on Center (13'-8" Modules)

¾" OSB Tongue and Groove Subfloor

Exterior Walls

2 x 6 Exterior Walls, 16" on Center

2 x 6 Gable Walls, 16" on Center

Exterior

7/16" OSB Sub-Siding on Full Perimeter on Each

Module Including Center "Marriage Wall"

House Wrap

Alcoa Low Maintenance Vinyl Siding

Alcoa Low Maintenance Vinyl Soffit Roof Overhang

Alcoa Low Maintenance Vinyl Shutters Per Plan

Fiberglass Insulated Exterior Doors (No Glass - Primed)

Andersen 200 Series Double Hung Tilt Windows with

Low E4 High Performance Glass *Easier Cleaning*

Andersen Gliding Glass Door with Low E High

Performance Glass (Per Plan)

Double Sidelite at Front Door (Per Plan)

Roof

10/12 Pitch Roof Truss System, 24" on Center

7/16" OSB Roof Sheathing

Shingle Underlayment Felt Paper

Seal-Down Fiberglass Asphalt Roof Shingles (Lifetime Warranty)

Shingle Vent

14" Eaves Overhang (9" Gable Overhang)

Insulation

R-30 Knauf EcoBatt™ Glasswool Under Second Floor -

10" EcoBatt™ with R-38 in Perimeter Spaces - 12" EcoBatt™

R-21 Knauf EcoBatt™ Glasswool in Exterior Walls -

5½" EcoBatt™

Interior

8' Ceilings (First Floor)

2 x 4 Interior Walls, 24" on Center

2 x 4 Center Marriage Wall, 16" on Center, on Each Side

½" Drywall with Smooth Finish on Walls

½" High Strength Drywall with Smooth or Textured

Finish on Ceilings

All Interior Drywall Surfaces are Primed with White

Latex Paint

Birch Veneer Hollow Core Interior Doors

Stained Poplar Interior Trim -2 ¼" Casing, 3" Base

Stained Poplar Window Sills

Ventilated Shelving in Closets

Floor Coverings

Wall-to-Wall Carpeting with 7/16" Pad in Living Room,

Dining Room, Bedrooms, Hall and Family Room

Nafco Tile in Kitchen, Baths, Utility & Foyer Areas

Kitchen Features

Homestead Oakridge Kitchen Cabinets

Crown Molding on Cabinets

Range Hood

Laminate Counter Top

Stainless Steel 8" Deep Sink

Delta Single Lever Faucet with Spray

Bathroom Features

Homestead Oakridge Bathroom Vanities

Laminate Vanity Top with Ceramic Bowl

Medicine Cabinet or Mirror (Per Plan)

Fiberglass Tub and Shower Unit

Delta Single Lever Faucets

Heating

Prepped For Forced Air Heating

Toe Kick Registers in Kitchen and Baths

Plumbing

Plumb-Pex® Water Line System

PVC Waste Lines

Plumbing Hook-Ups for Washer in Utility Room

Frost Proof Outside Water Faucets (2)

50 Gallon Electric Water Heater

Electric

All Electric Work in Accordance with National

Electric code

200 AMP Electric Circuit Breaker Service

Door Chimes

Smoke Alarms Per Code

Interior and Exterior Lighting Fixtures

Bedroom Ceiling Lights

Paddle Fan Prep in Dining Room and Bedrooms

Halogen LED Can Lights in Kitchen

Exterior Weatherproof Electric Outlets in Front and Rear

220 Volt Outlet for Dryer in Utility Room

Recessed halogen LED Can Lights in Kitchen

Fan/Light Combination in all Bath Areas

Additional Features:

Chalet Plans:

R-30 Insulation in Vaulted Ceiling, 3 ½" Fiberglass

Batt and 2 ¼" Thermax

Tongue and Groove Pine Board Ceiling in

Great Room (Unfinished)

Great Room Beams Wrapped in Pine

Boards (Unfinished)

Indirect Fluorescent Lighting in Great Room

Allowance for Great Room Lighting Fixture

Modesto and Rockport Plans:

Roof

10/12 Pitch Front Roof Truss System, 24" On Center

4/12 Pitch Rear Roof Truss System, 24" On Center

Attic Storage Area (Per Plan) with ¾" OSB T&G

Subfloor with R-30 Insulation

Pull Down Stairs to Attic Storage

Traditional Features



Shaw Atwood Carpet

100% 35oz. Nylon
R2X Soil and Stain Resistance
5-year Limited Warranty Against Soiling
and Liquid Spills
5-year Textureguard™ Warranty



Nafco Tile

PermaStone™ Collection
16" x 16" Individual Tiles for Easy Repairs
Look and Feel of Ceramic and Stone
Lifetime Extreme Performance Residential
Limited Warranty



Andersen 200 Series Windows

Tilt-Wash Double Hung
Wood Frame and Sash
Attractive Low Maintenance Exteriors
Rigid Vinyl PVC Exterior Cladding (No Painting)
Prefinished Interiors (Two Tone Option)
Low-E Glass, Energy Star Qualified
U Factor .30; SHGC .32; VT .35
Full Insect Screen
Transferable Limited Warranty



Andersen Permashield™ Gliding Door

Wood Frame and Panels
Rigid Vinyl PVC Exterior Cladding (No painting)
Anodized Aluminum Track with Stainless Steel Cap
Reachout Locking Hardware and Auxiliary Foot Lock
Tempered Smart Sun Glass (70% More Efficient)
U Factor .27; SHGC .22; VT .50
Gliding Insect Screen
Transferable Limited Warranty



Stained Poplar Trim and Birch HC Doors

2 ¼" Colonial Casing and 3" Colonial Base
1 ⅜" Flush Birch Veneer Hollow-Core Doors with
Satin Finish Clear Coat.

Challenger Features



Shaw Lassiter Carpet

100% 25oz. Nylon
R2X Soil and Stain Resistance
5- year Limited Warranty Against Soiling
and Liquid Spills



Congoleum Diamondflor Vinyl

Vinyl Sheet
Armstrong Toughguard™ 10-year Limited
Residential Warranty



Silverline 2900 Series Vinyl Window

Single Hung Tilt
Never Needs Painting
Multi-Chambered Frame & Sash Provide Increased Rigidity
Integral Lift Rail for Easy Lifting of Sash
True Sloped Sill Prevents Water Buildup
Dual Weather-Stripping to Virtually Eliminate Drafts
U Factor .30 Window LoE³ Glass with Argon
SHGC .25
Insect Screen
Limited Lifetime Warranty



Silverline Vinyl Gliding Door

Fusion Welded Frame and Panels Create Strong
Weathertight Door
Tandem, Self Leveling Ball Bearing Rollers Designed
for Easy Operation
¾" Insulated Tempered Glass
U Factor .28 LoE³ Glass with Argon
SHGC .25
Insect Screen
Limited Lifetime Warranty



Painted FJ Pine Interior Trim and Jeld-Wen Doors

2 ¼" Colonial Casing and 3" Colonial Base
Painted Trim and Doors - Easy to Clean and Touch-Up
Moulded Wood Fiber Doors - Wood Grained
Classic Six Panel and Two Panel Styles