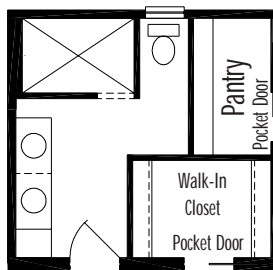


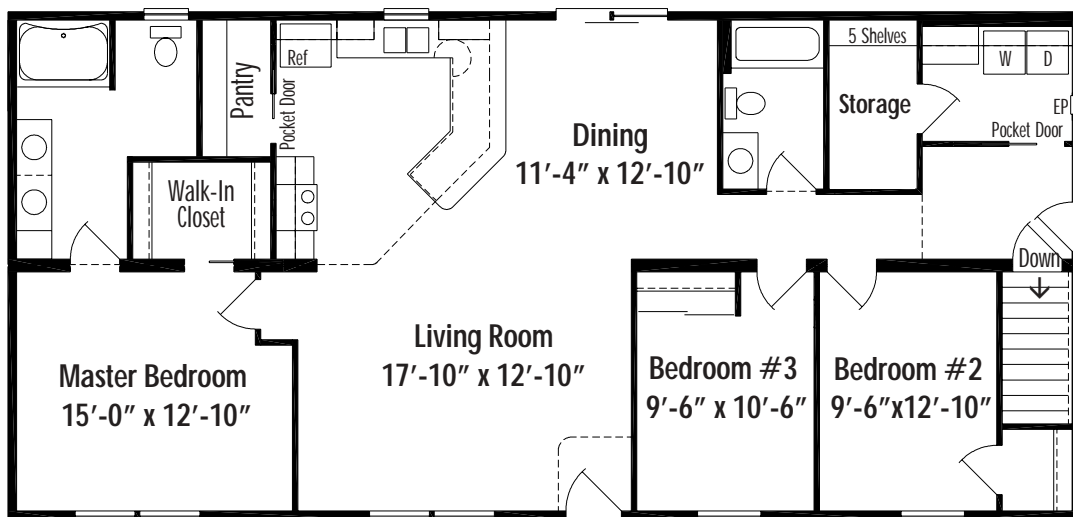
Kenwood F



Shown with Optional Porch and Garage



Master Bath Option KWB4
6' Walk-In Tiled Shower with Curb
Available on E and F Only



Kenwood F Basement 27'-4" x 58', 1585 Sq. Ft. Living Area

Floor plan dimensions are approximate. Artist's floorplans, elevation renderings and photographs are for illustration purposes only and may include optional features. Garages, porches and other attachments are not included unless specified in the written contract. All construction details and specifications must be written in the contract. No oral conditions.